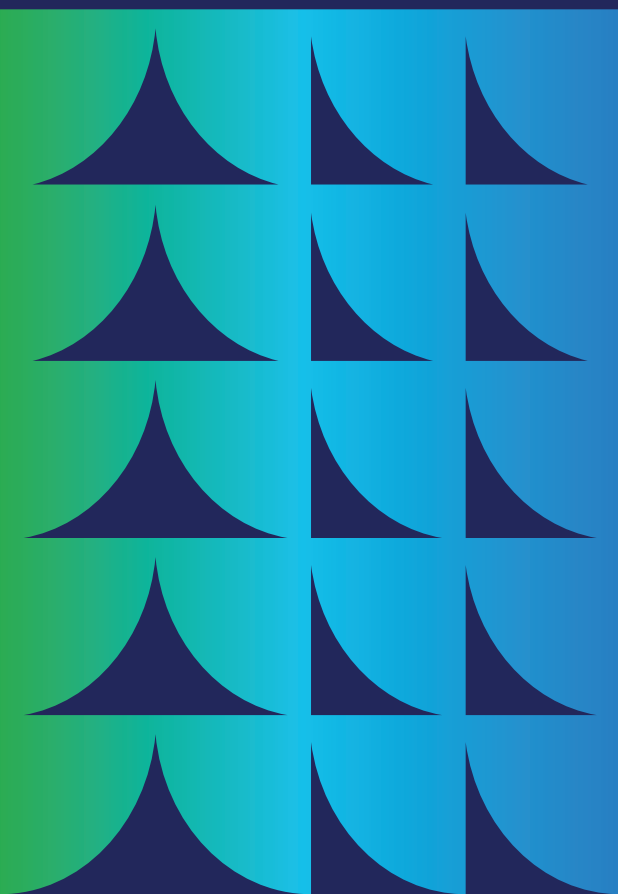


Your 2023/2024 Health and Social Care Prospectus



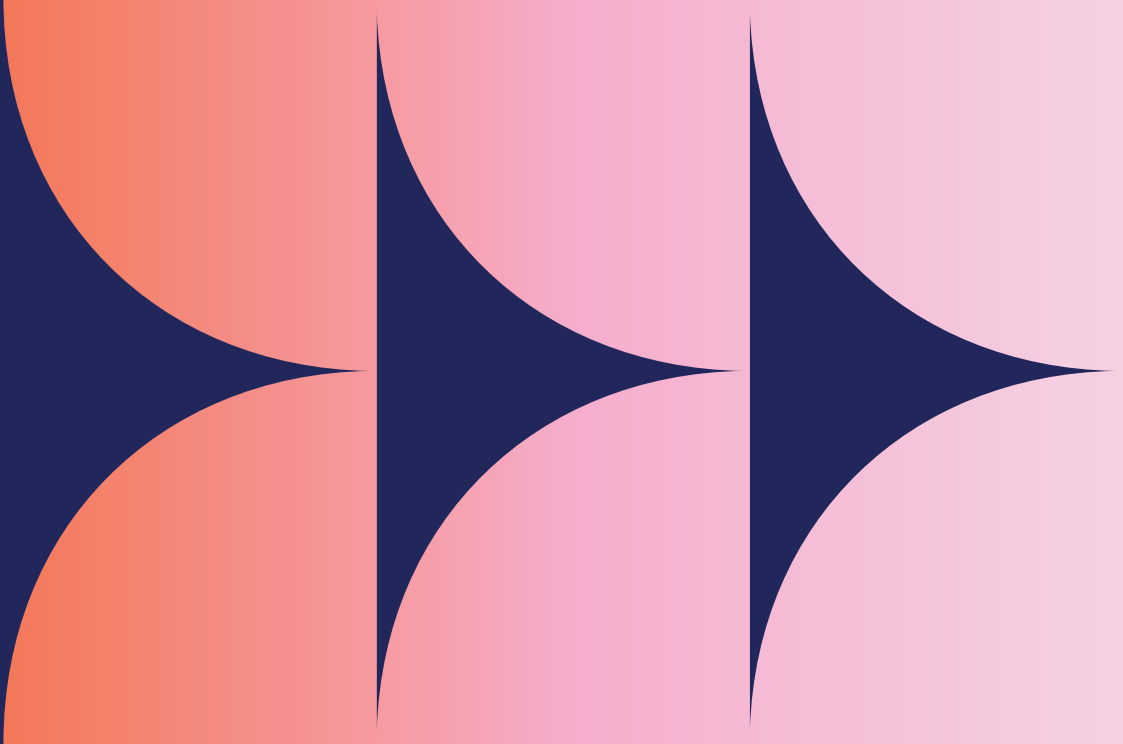


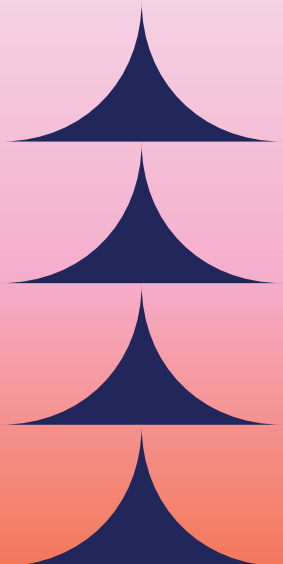
The future is open

There's no limit to what you can achieve with The Open University. Unlock a world of possibilities – wherever you are and wherever you want to go.

- Get a step closer to your dream career.
- Gain a globally recognised, high-quality university education.
- Explore your passion and what you're capable of.
- Create a better life for you and your family.
- Start the next chapter in your learning journey.

Over two million people have already transformed their futures with us. Now it's your turn.





Start achieving your goals here and now

Welcome to The Open University

This prospectus is the start of your journey and will cover:

- ▶ **what you can study**
- ▶ **how long it'll take**
- ▶ **how distance learning works**
- ▶ **your funding options**
- ▶ **how to register.**

We bring university to you. We've pioneered supported distance learning for over 50 years and are the world leaders in high-quality distance education.

Our flexible approach to learning means you can study from home around your job, family and life. So you can gain a recognised qualification without putting your life on hold. Plus, you'll receive expert tutor support every step of the way and join our community of learners in the UK and across 157 countries worldwide.

The Open University was established by Royal Charter on 23 April 1969. We've come a long way since then, constantly innovating our teaching and research at every step to make sure that our founding mission – enabling access to education for all – remains as relevant now as it did over 50 years ago.

- An OU qualification is widely respected by businesses, with 80% of FTSE 100 companies sponsoring staff to study with us.
- More CEOs and Managing Directors of UK companies have studied with us than any other UK university.
- 87% of our alumni say studying with us helped them achieve their career goals.
- 70% of our students are already in work, balancing their careers with their studies.
- We are the largest UK university for undergraduate education.
- Throughout our 49-year partnership with the BBC, we've co-produced numerous TV and radio series – like Sir David Attenborough's *Frozen Planet II* and *The Green Planet*.

Contents

Explore the OU

University that works for you	4
How do we compare with other universities?	5
Qualifications to suit you	6
Achieve your goals with us	7
Welcome to Health and Social Care	8

How OU study works

Building your qualification	10
Prepare for study with an Access module	12
How long your qualification will take	14
Supporting you to succeed	16
How you'll learn	17

Fees and funding

Undergraduate fees and funding options	18
Postgraduate fees and funding options	20

Undergraduate

Find your undergraduate course	23
--------------------------------	----

Postgraduate

Find your postgraduate course	59
-------------------------------	----

Make it happen

Registering is easy	68
Useful information	69
Get in touch	Back cover

University that works for you

The Open University is proud to be unconventional. We don't believe there's a right order to do things in life, only what's right for you. We're here to help you get where you want to be.

Learn on your terms

Learning with us is flexible and supportive, guided by expert tutors every step of the way.

We'll give you all the essential course resources and materials you need. Plus, our dedicated Student Support Team is always there to help you if you need advice.

- You decide when and where you learn.
- You can keep on earning while you learn.
- You can fit study around other life commitments.
- You can fund your studies in a way that suits you.

Learn from the best

With our network of more than 5,000 expert tutors, you'll receive innovative, insightful teaching from subject specialists, many of whom combine their teaching work with academic or industry roles.

Spark your imagination

From online tutorials, to books, to the virtual learning environment, you'll study using a variety of digital and physical resources. So, however you learn best, we'll keep you inspired.

Our assessment methods

Depending on your course, we'll use a blend of written assignments, oral and practical assessments, projects, exams, dissertations and portfolios. For more on assessments, visit openuniversity.co.uk/assessment.

Additional study support

Did you know that we support more disabled students than any other UK university? We'll provide access to tools and guidance and ensure you get the appropriate level of support to make the best of your studies.

Connect with like-minded students

Module discussion groups are there for you to talk about your subject, coursework or to share study methods. You can also connect with us on social media or join one of the many informal social media groups set up by your fellow students.

When you register, you'll become a member of our Students' Association. This community gives you the chance to meet fellow students and help influence University decisions. For more information, visit oustudents.com.

Get social with us

- Facebook: @OUstudents
- Twitter: @OUstudents
- Instagram: @OUstudentslive



The OU has given me a confidence in myself that I never thought I would have. I believe in myself completely now and know I can achieve anything I want.

Gina Guerriero
OU graduate



How do we compare with other universities?

An OU qualification is just as rigorous and respected as one from a campus-based university and is highly valued by employers. What's different is our unique approach to learning, which means you don't have to put your life on hold.

Bringing university to you, wherever you are

We've continuously developed our supported distance learning method for over 50 years. Our resources are designed so that you can fit a high-quality university education around your busy life.

With the OU, you can study whenever and wherever you like.

We're respected

A combination of education and experience is highly sought after and can greatly enhance your employment prospects. An OU qualification allows you to put what you learn into practice immediately. You'll be able to show you're dedicated, driven and committed – personal qualities that are valued in any workplace.

We're flexible

Studying with the OU allows you to work as you learn and apply your new skills and knowledge in the real world.

There's no such thing as a typical OU student. You'll decide how and when you want to study. Our tutors and Student Support Teams are used to helping students balance study with other commitments.



We're a thriving community

You'll be joining one of the most diverse, dynamic and inclusive student communities. Whatever your goals, we're here to help and champion you to fulfil your ambition.

More than 170,000 students study with us each year. Come and join them.

We're open to all

We believe that your ability isn't only based on your previous qualifications. That's why there are no formal academic entry requirements for most of our undergraduate courses.

Find out what you'll need to study our postgraduate courses at openuniversity.co.uk/pg-ready.

More information

Find out more about The Open University.



Visit openuniversity.co.uk/learning



Qualifications to suit you

With over 200 qualifications to choose from, whatever your goal, it's possible with The Open University. You can study towards a degree or start with a certificate or diploma of higher education and build on your studies as you go.

Undergraduate

Certificate of higher education

Get a general grounding or improve your understanding of a subject area.

Diploma of higher education

Expand your knowledge and improve your skill set in a specialised area.

Foundation degree

Focus on a subject related to what you're doing now, either workwise or voluntarily.

Named degree

Complete modules in a specific subject to earn an honours degree and open doors to a new interest or career.

Open degree

Design your own honours degree and include modules from different subject areas to suit your interests and needs.

Postgraduate

Postgraduate certificate

Ideal for professional and career development, this is the first step towards a masters degree as well as being a valuable qualification in its own right.

Postgraduate diploma

Work towards a widely recognised qualification that is equivalent to two-thirds of a masters degree.

Masters degree

Study modules towards an internationally-respected qualification while gaining specialist academic, professional, or technical skills.

Open masters

Choose modules from a range of subjects to build a masters degree individual to you.

Doctorate in Health and Social Care

A postgraduate research degree designed for established professionals working in health and social care settings.

Discover your ideal course

Find the course to match your ambition.



Visit
**openuniversity.
co.uk/course-
types**

Achieve your goals with us

We've been helping people like you realise their potential since 1969. We've made it happen with a unique, flexible, student-centred approach.

We will:

- ▶ help you get a qualification to suit you and your goals
- ▶ provide a flexible learning experience that works for you and your life
- ▶ use technology and teaching methods that enhance your study experience
- ▶ support you every step of the way.

You will:

- ▶ learn from high-quality materials that are designed with you in mind
- ▶ benefit from continuous innovation and accessible learning, whatever your circumstances
- ▶ have access to world-class resources, whenever you need them
- ▶ gain a qualification that is respected by employers around the world.



Student stories

Every year, thousands of students take the life-changing step of studying with us.

Hear directly from some of our inspirational students and discover how being an OU student is helping them to achieve their ambitions.



Visit
openuniversity.co.uk/stories



Welcome to Health and Social Care

Health, social work and social care services in the UK are constantly changing. Innovations in policy and practice, as well as new standards for treatment, care and support, provide challenges and opportunities for professionals working in the fields of Health and Social Care.

The benefits of studying health, social work and social care with us include:

- ▶ **a teaching model designed to fit around your work and home life - allowing you to earn while you learn**
- ▶ **a wide range of courses, so no matter what level of experience or interest you have, we have a course to suit you**
- ▶ **learning from a faculty that works with employers, including the NHS, social services and voluntary sector, providing qualifications that meet their changing needs**
- ▶ **gaining a broad understanding of the diverse practices, settings and influential factors that make up and affect this sector**
- ▶ **access to learning that is informed by research.**

Whether you already work in the sector or are generally interested in this field, studying with us provides you with a sound and critical understanding of the health and social care policy, theory and practice essential in today's fast-changing care sector. You'll be studying with one of the largest and most innovative providers of educational opportunities and learning solutions in the health and social care sector.

Undergraduate

Our undergraduate qualifications range from certificates, diplomas and foundation degrees in areas of Health and Social Care, and a choice of degrees including:

- Health and Social Care
- Health Science
- Nursing (Adult, Children and Young People, Learning Disabilities, and Mental Health)
- Public Health
- Social Work.

Postgraduate

We offer a number of certificates, diplomas and degrees at postgraduate level, covering areas including:

- Advanced Clinical Practice
- Childhood and Youth
- Social Work.

To anyone considering Open University study I'd say do it, you won't look back. It's hard but so worth it. For me, the highlights were passing each module and seeing my marks improve as I progressed. The pride you feel is something you definitely can't buy!

Sarah Burgess
BSc (Hons) Adult Nursing

Professional accreditation

We offer qualifications in non-medical prescribing, nursing associate practice, nursing and social work that are approved by external regulators.

By working in partnership with employers our learning programmes in nursing and nursing associate practice are recognised by health and social care employers across the UK providing you with an accredited route into nursing.

With around 250 graduates every year, we're also the UK's largest provider of a part-time qualifying degree in social work. If you already work in a social care setting, this degree offers you a unique opportunity to build on your experience towards a professional qualification.

Apprenticeships

As one of the Education and Skills Funding Agency's approved apprenticeship providers, we are committed to ensuring that we provide a selection of high-quality apprenticeships to support those in health, social work and social care in England.

Our apprenticeships include:

- Advanced Clinical Practitioner Degree Apprenticeship
- Higher Apprenticeship in Health (Nursing Associate)
- Registered Nurse Degree Apprenticeship
- Social Worker Degree Apprenticeship.

Please note that our apprenticeships are only available through your employer and you cannot register directly with the OU.

Employers interested in finding out more about apprenticeships should go to **openuniversity.co.uk/apprenticeships**, email us at **apprenticeships@open.ac.uk** or call **0300 303 0122**.

You're on your way

That's step one done. Now take the next by reading more about our health and social care qualifications, before registering for your chosen course.



Visit
openuniversity.co.uk/courses



Building your qualification

Undergraduate

You'll need to build up a certain number of credits to gain your qualification. Here's how it works:

The different stages

- Complete one stage for a certificate of higher education, two stages for a diploma of higher education or foundation degree, and three stages to gain an honours degree.
- To complete each stage, you must build up a set number of credits.

The credits you need

- You'll need at least 120 credits to complete each stage. This means that to earn an honours degree, 360 credits are required in total.
- Credits are gained by successfully completing modules.

The modules available

- With each module you successfully complete you'll earn a set number of credits, usually either 30 or 60.
- Modules are either compulsory or chosen from a range of options.

Access module¹
An optional module to build your confidence and prepare you for further study.

Stage 1

To complete Stage 1, you'll need 120 credits, studying modules worth 30 or 60 credits.

120 credits

Certificate of higher education

Stage 2

To complete Stage 2, you'll need a further 120 credits, studying modules worth 30 or 60 credits.

240 credits

**Diploma of higher education or
Foundation degree**

Stage 3

To complete Stage 3, you'll need a further 120 credits, studying modules worth 30 or 60 credits.

360 credits

Honours degree

¹ Only available in the UK, Channel Islands, Isle of Man and Republic of Ireland.

Read more

Find out more about how you work towards an undergraduate qualification.



Visit
**openuniversity.
co.uk/ug-qual**

Postgraduate

Postgraduate qualifications are made up of a set number of credits. You build up credits by successfully completing modules. You'll need:

- 60 credits to gain a postgraduate certificate
- 120 credits to gain a postgraduate diploma
- 180 credits to gain a masters degree.

Modules are either compulsory or chosen from a range of options.

Getting started

All you need to do is choose which qualification you want to study and register on a module that counts towards that qualification.

60 credits
at postgraduate level.

Postgraduate certificate

A further 60 credits at postgraduate level,
totalling **120 credits**.

Postgraduate diploma

A further 60 credits at postgraduate level,
totalling **180 credits**.

Masters degree



Read more

Find out more about how you work towards a postgraduate qualification.



Visit
openuniversity.co.uk/pg-qual

Prepare for study with an Access module

We're different to other universities because we're open to people based on their potential rather than their prior qualifications. Our students come from a diverse range of academic backgrounds, so we offer a choice of starting points depending on how confident you are in your study skills.

You can choose to dive straight into your qualification at Stage 1, or you can get started with an optional Access module. If you aren't sure where to start, you can find more information on the best starting point for you on our website, visit openuniversity.co.uk/ready.

An Access module is a great place to start if you want a gentle introduction to Open University study. It can also help you find out more about your interests and where you want your learning to take you.

Access modules are currently only available for students resident in the UK, Channel Islands, Isle of Man and Republic of Ireland.

How Access modules work

You'll have a dedicated tutor who'll provide academic support via email and one-to-one phone tutorials. Your Student Support Team will be on hand to help with everything else, including fees and funding, administrative support, and study-related guidance. Your Access module materials are a blend of printed and online resources. You'll engage with the materials to complete tasks such as online quizzes and tutor-marked assignments. At the end, you'll demonstrate your learning by completing a final written assignment. There's no exam.

Access modules start in February, May and October and usually last for 30 weeks. Each week requires around nine or ten hours of study. If your module has the fast track option, you can increase your study time and complete your Access module in just 18 weeks.

What you need

You'll get access to your module website and your books and other printed materials will be posted out to you. All you need is:

- a phone
- a computer with internet access.

What you can study

Each Access module covers relevant topics and develops the skills you'll need as you continue your chosen qualification.

Psychology, social science and wellbeing Access module (Y034)

Explore some of our most popular subjects such as psychology, childhood and youth, early years, health and social wellbeing, sport,

education, and social sciences. Each area is introduced and explained at a gentle pace, perfect if you want to get to grips with something new.

We offer three other Access modules, which are more relevant to other subject areas:

- *Arts and languages Access module (Y031)* – also available as *Arts and languages Access module: fast track (YXFT031)*
- *Business and law Access module (Y035)*
- *Science, technology and maths Access module (Y033)* – also available as *Science, technology and maths Access module: fast track (YXFT033)*



Do you qualify for a free Access module?

You can study an Access module for **free** if you:

- live in the UK (excludes Channel Islands and Isle of Man) or have a British Forces Post Office address, and
- have a personal income of £25,000 or less, or you receive qualifying benefits, and
- have completed less than one year of a full-time undergraduate programme at FHEQ or CQFW level 4/ SCQF level 7 or above, and not completed 30 credits or more of OU study.



Students who start with an Access module are more likely to be successful when they advance to OU Stage 1 study.

How much does an Access module cost?

If you don't qualify to study for free, the cost depends on where you live.

- In England, the Channel Islands and the Isle of Man it's £866.
- In Northern Ireland it's £276.
- In the Republic of Ireland it's £831.
- In Scotland it's £282.
- In Wales it's £328.

You can pay up front by debit or credit card or by bank transfer. Or spread the cost with an Open University Student Budget Account – for more information, see page 21.

If you're studying an Access module as part of an OU qualification and you live in England, Wales or Northern Ireland, you could cover the cost with a student loan – for more information, see pages 18–19.



The Access module really helped equip me with the necessary skills, which in turn gave me the confidence to go on and study at degree level.

Tim Walker
OU student



More information

Find out more about our Access modules.



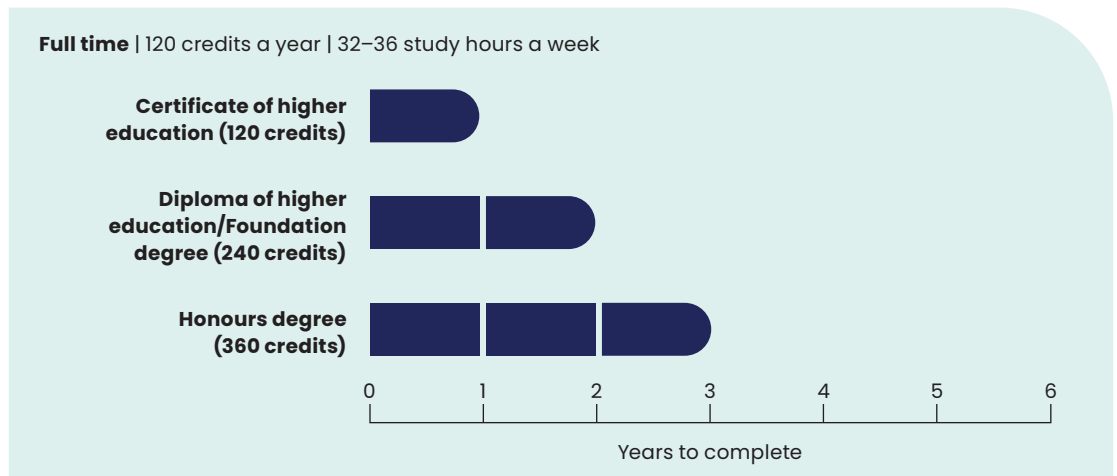
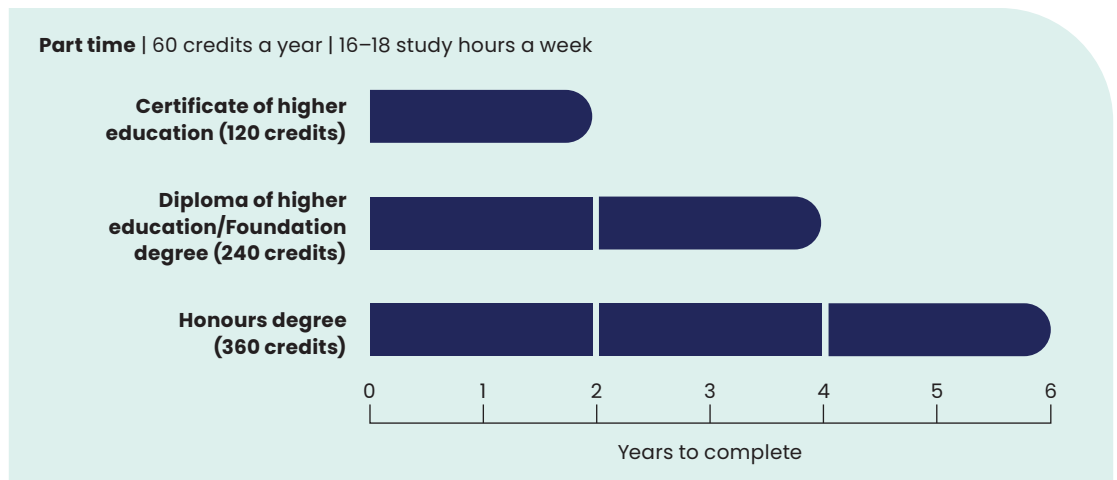
Visit
openuniversity.co.uk/jug-access

How long your qualification will take

We give you the flexibility to choose the amount of study you want to take on each year. That means you can get the qualification you want in a timeframe that works for you.

Undergraduate qualifications

Most of our students study part time, gaining 60 credits a year. That's like studying at half the rate of a full-time course at a campus-based university. If you want to complete your study at full-time equivalent intensity, you'll need to gain 120 credits per year.



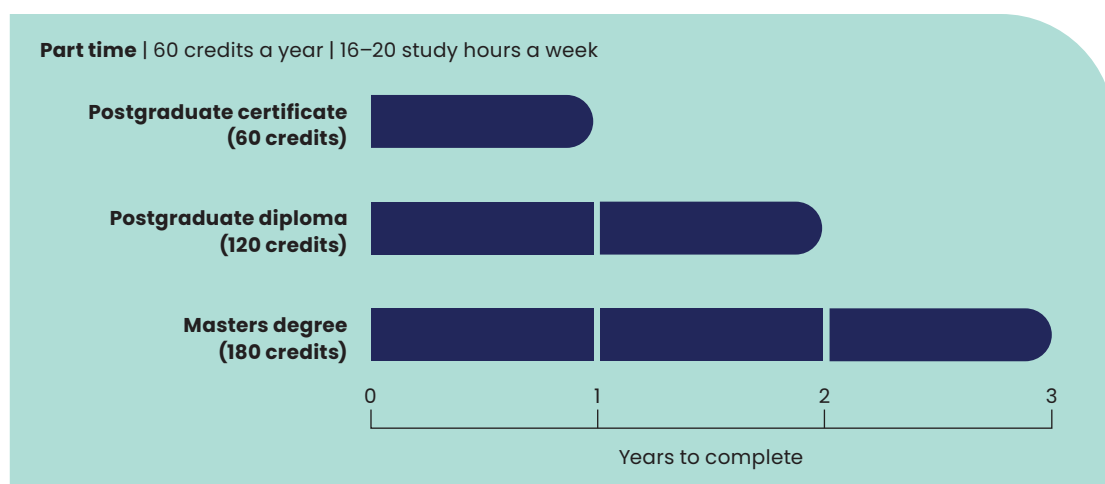
Some qualifications follow a different pattern of study. See individual descriptions on our website for more information. All OU students are considered part-time students. This remains the same even if you choose to study at a full-time equivalent intensity.

Postgraduate qualifications

How long it will take to get your qualification depends on how it's structured and the number of credits required. All of our postgraduate courses are offered as part-time study and the usual timescales for individual module completion are shown below.

- 15–30 credit module – typically five months.
- 60 credit module – typically nine months.

The guide below gives you an idea of how long it could take you to gain your qualification.



Some qualifications follow a different pattern of study. See individual descriptions on our website for more information.

Have you studied before?

If you've studied at university level before, you could count this study towards an OU qualification. This could save you time and money by reducing the number of modules you need to study.

Visit openuniversity.co.uk/credit-transfer to find out more.

More information

Find out more and use our time planner tool.



Visit
openuniversity.co.uk/time



Supporting you to succeed

You're never alone when you're studying with The Open University. Your community of expert tutors and fellow students are here to support you every step of the way.

For each module, you'll have a dedicated tutor who'll be your first point of contact for any queries. They'll lead regular tutorials, mark your assignments, provide detailed written feedback, and give support over the phone, through email, or online.

Our Students Association, OU Community forums and range of societies and groups mean you're connected to one of the UK's largest student communities.

Your Students Association awaits

The Open University Students Association is a lot like a student union. Run by students, for students, it gives you access to our services and opportunities. You're automatically a member, and there's no fee.

It exists to help you make the most of your time studying, promote your interests and ensure the OU is more than just a place of learning – it's a student community.

Led by a team of elected students, and supported by hundreds more, the Association:

- offers student support services

- creates opportunities to engage in a vibrant and inclusive student community
- is a strong, effective and accountable representative body for all OU students
- works in partnership with the OU to enhance the student experience

Whether you're looking for like-minded students, a club, society or support group you'll discover something for you.

To find out more, visit oustudents.com.



There is a community at The Open University. Everyone supports each other. One tutor that really inspired me was Michael. His words of encouragement gave me a confidence boost. My grades just kept on improving and improving.

Joe Acaye
OU student



Join our community

Find out more about how you'll be supported during your studies.



Visit openuniversity.co.uk/community

How you'll learn

With regular tutorials and an online hub to manage your studies, you'll have everything you need to succeed.

Once you've registered, you'll have access to StudentHome, where you'll be able to:

- see an overview of your course and the modules you're studying
- submit your assignments
- choose and enrol on your next module
- visit our online Help Centre
- access your virtual learning environment.

The virtual learning environment or 'module website' contains all the online study resources you'll need, including:

- a week-by-week study planner
- an assessment section, giving details of your assignments and their due dates
- the tutorial booking system
- your online tutorial room
- module forums where you can discuss topics with other students and complete collaborative work online
- PDF and accessible formats of your module materials and resources.

What you need

To study with us, you'll need:

- a computer with internet access. Don't worry if you haven't got access to one right now – you could receive financial support to help you buy one
- a good grasp of the English language. We teach our courses in English. If you're not sure whether your English is at the right level, go to openuniversity.co.uk/englishlanguage for help and guidance.



Nearly there

Read on to discover more about how we can help you fund your studies and the qualifications you could earn.

Undergraduate fees and funding options

How much does it cost?

You'll fund your studies on a module-by-module basis, which means you won't have to pay for your whole qualification upfront. We've given you an idea of the costs below:

FOR THOSE LIVING IN ENGLAND AND OUTSIDE THE UK (EXCLUDING THE REPUBLIC OF IRELAND)

Credits each year	Cost per year ¹
60	£3,462
120	£6,924

The total cost for a typical 360-credit honours degree, based on today's prices, is £20,772. In England, that's three-quarters the cost of an equivalent qualification offered at a campus-based university – a saving of 25%.²

¹ 2023/24 prices (exceptions apply). Fees normally increase annually. For further information about our fee policy, visit openuniversity.co.uk/fee-rules.

² Based on maximum chargeable fees for the 2023/24 academic year.

FOR THOSE LIVING IN NORTHERN IRELAND

Credits each year	Cost per year ³
60	£1,104
120	£2,208

The total cost for a typical 360-credit honours degree, based on today's prices, is £6,624.

³ 2023/24 prices (exceptions apply). Fees normally increase annually. For further information about our fee policy, visit openuniversity.co.uk/fee-rules.

FOR THOSE LIVING IN THE REPUBLIC OF IRELAND

Credits each year	Cost per year ⁴
60	£3,324
120	£6,648

The total cost for a typical 360-credit honours degree, based on today's prices, is £19,944.

⁴ 2023/24 prices (exceptions apply). Fees normally increase annually. For further information about our fee policy, visit openuniversity.co.uk/fee-rules.

FOR THOSE LIVING IN SCOTLAND

Credits each year	Cost per year ⁵
60	£1,128
120	£2,256

The total cost for a typical 360-credit honours degree, based on today's prices, is £6,768.

⁵ 2023/24 prices (exceptions apply). Fees normally increase annually. For further information about our fee policy, visit openuniversity.co.uk/fee-rules.

FOR THOSE LIVING IN WALES

Credits each year	Cost per year ⁶
60	£1,312
120	£2,624

The total cost for a typical 360-credit honours degree, based on today's prices, is £7,872.

⁶ 2023/24 prices (exceptions apply). Fees normally increase annually. For further information about our fee policy, visit openuniversity.co.uk/fee-rules.

WHAT'S INCLUDED?

Your module materials, tuition, assessment and exams are all included in our module fees. There are some additional costs that aren't included.

- You'll need your own computer and internet access.
- For some modules, you may need to buy additional set books, such as fiction books or a language dictionary.
- You may need to pay for travel to tutorials or exams.
- A handful of our modules include a residential school. For these, you'll need to fund the cost of travel to the residential school venue. There may also be additional costs for meals and accommodation.

Funding your studies

ENGLAND

Part-Time Tuition Fee Loan

The best way to fund your undergraduate studies, regardless of age or income, might be with a student loan. In fact, 80% of OU students in England fund their studies this way.

Key facts

- You don't have to pay anything upfront. Repayments only start when your salary exceeds the income threshold, which is currently £25,000.
- Repayments are deducted automatically from your salary.
- You can pay off the loan early without any penalties.
- Any balance outstanding will be written off after 40 years.

Here's how your monthly student loan repayments could look:

Income each year before tax	Monthly repayment ⁷
Up to £25,000	£0
£27,000	£15.00
£30,000	£37.50

⁷ Repayments are based on what you earn, not what you owe. You'll repay 9% of what you earn over £25,000. For example, if you earn £27,000, you'll repay £180 that year (9% of £2,000). That's just £15.00 per month.

NORTHERN IRELAND

Part-Time Tuition Fee Grant

You could be eligible for up to £1,230 a year. The money you receive isn't a loan – you won't need to pay any of it back. The amount you'll be awarded is determined by your household income and the rate at which you study.

Part-Time Tuition Fee Loan

If you're not eligible for the grant, or if it doesn't cover the full cost of your tuition fees, you can pay in full or in part using an alternative payment method, such as a Part-Time Tuition Fee Loan.

Course Grant

You may also be eligible for a non-repayable Course Grant of up to a maximum of £265 a year. It's intended to help with course-related costs, such as a computer, internet access, stationery or travel to tutorials.

SCOTLAND

Part-Time Fee Grant

You could qualify for a Part-Time Fee Grant and top-up funding to cover 100% of your course fees. You'll likely be eligible if your personal income is £25,000 or less, or you're on certain benefits, and you're studying at least 30 credits a year. The fee grant and top-up funding aren't loans, so you won't need to pay any of it back.

WALES

Part-Time Tuition Fee Loan

The best way to fund your undergraduate studies, regardless of age or income, might be with a student loan. In fact, 80% of OU students in Wales fund their studies this way.

Key facts

- You don't have to pay anything upfront. Repayments only start when your salary exceeds the income threshold, which is currently £27,295.
- Repayments are deducted automatically from your salary.
- You can pay off the loan early without any penalties.
- Any balance outstanding will be written off after 30 years.

Here's how your monthly student loan repayments could look:

Income each year before tax	Monthly repayment ⁸
Up to £27,295	£0
£29,000	£12.79
£34,000	£50.29

⁸ Repayments are based on what you earn, not what you owe. You'll repay 9% of what you earn over £27,295. For example, if you earn £29,000, you'll repay £153.45 that year (9% of £1,705). That's just £12.79 per month.

Maintenance grants

You could be eligible for up to £4,500 a year to help with living costs. The money you receive isn't a loan – you won't need to pay any of it back. The amount you'll be awarded is determined by your household income and the rate at which you study.

Maintenance loans

You'll also be eligible to apply for a non-means-tested maintenance loan, should you need it, to 'top-up' the financial support you've received from grants.

Self-funded study

If you're not eligible for student loan or grant funding, or you live outside the UK, we offer a range of other funding options.

OUSBA loan

Pay your fees in instalments with a loan from Open University Student Budget Accounts Ltd. See page 21 for more information.

Card payments

Pay for each module with a debit or credit card in one quick, simple payment.

Mixed payments

Combine your payment options to fund your studies the way you want.

Other support

Bursary for Black Students⁹

If you identify as being from a Black background, you could receive a £500 bursary to help with your study costs.

Carers' Bursary⁹

If you provide unpaid care for a friend or family member who cannot cope without your

support, you may be eligible for a bursary of £250 to support you with your study costs.

Care Experienced Bursary⁹

If you have been in the care of a Local Authority at any stage of your life, you may be eligible for a bursary of £250 to support you with your study costs.

Carers' Scholarship Fund⁹

If you are, or have recently been, an unpaid carer, you may be able to study a full OU qualification for free.

Disabled Students' Allowance⁹

You could access financial support towards study costs incurred as a result of your disability.

Disabled Veterans' Scholarships Fund⁹

If you've been injured in, or due to, military service, you could be eligible for funding to complete a full OU qualification.

Employer sponsorship

Your employer could partially or fully pay your module fees.

Sanctuary Scholarship⁹

If you've been displaced from your homeland for political, economic, ethnic, environmental, or human rights pressures, you could be eligible to study for free.

Scholarship for Black Students⁹

If you identify as being from a Black background, you could study a full OU qualification for free.

Study-related costs⁹

If you're on a low household income or receive certain benefits, you might be eligible for additional funding for study-related costs, such as travel, childcare and internet access.

⁹ UK residents only.

Find out more

Find out more about undergraduate fees and funding.



Visit
**openuniversity.
co.uk/ug-fees**
Call
0300 303 5303

Postgraduate fees and funding options

How much does it cost?

You'll fund your studies on a module-by-module basis, which means you won't have to pay for your whole qualification upfront. To find the total fee for your qualification, visit our website.

WHAT'S INCLUDED?

Your module materials, tuition, assessment and exams are all included in our module fees.

There are some additional costs that aren't included.

- You'll need your own computer and internet access.
- For some modules, you may need to buy additional set books, such as fiction or theory books.
- You may need to pay for travel to tutorials or exams.
- A handful of our modules include a residential school. For these, you'll need to fund the cost of travel to the residential school venue.

Funding your studies

ENGLAND

Postgraduate loan

You could be eligible for a maintenance loan of up to £12,167 from Student Finance England.

- Loans are non-means-tested, so eligibility isn't based on your income.
- The money is paid directly to you.
- You'll get your first instalment after you've paid for your first module and started studying.
- Payments are spread across two or three years.
- Repayments only start when you earn more than the income threshold (currently, £21,000).
- You'll repay 6% of your income over £21,000. So, for example, if you earn £25,000, you'll repay only £240 that year (6% of £4,000). That's just £20 a month.
- Payments are deducted automatically from your salary.
- Any balance outstanding after 30 years will be written off.

To be eligible, you must:

- be a resident in England
- be under 60 years old
- be studying a masters degree that can be completed in no more than three years
- not currently have a masters degree or equivalent
- be studying your qualification from the beginning.

WALES

Learning grant and maintenance loan

- You could access up to £18,770 of maintenance grants and loans.
- You'll automatically get a £1,000 non-repayable grant, rising to £6,885, depending on your income.
- Loans are non-means-tested, so eligibility isn't based on your income.
- The money is paid directly to you.
- Payments are made in instalments, spread across however long you're studying.
- You'll get your first instalment after you've paid for your first module and started studying.
- Loan repayments only start when you earn more than the income threshold (currently, £21,000).
- You'll repay 6% of your income over the threshold – so, for example, if you earn £25,000, you'll repay only £240 that year (6% of £4,000). That's just £20 a month.

To be eligible, you must:

- be a resident in Wales
- be studying for a masters degree (and not already hold a masters degree or higher qualification)
- be under 60 years old.

Wales STEM bursary

If you study towards an eligible Science, Technology, Engineering, Mathematics, or Medicine (STEMM) masters, you might also be eligible for an additional £2,000 to help with study or living costs.

Wales 60+ bursary

If you're aged 60 or over at the start of your masters' seasonal academic year, you could receive a non-repayable bursary of up to £4,000 towards study or living costs.

NORTHERN IRELAND AND SCOTLAND

Postgraduate loan

You could be eligible for a tuition fee loan of up to £6,500 from Student Finance Northern Ireland or up to £7,000 from the Student Awards Agency Scotland.

- Loans are non-means-tested, so eligibility isn't based on your income.
- There's no upper age limit.
- Payments are spread over either two or three years, depending on your chosen qualification.
- Repayments only start when you earn more than the income threshold (currently, £19,895 in Northern Ireland and £25,375 in Scotland).
- You'll repay 9% of your income over the threshold – so, for example, if you earn £27,000 and live in Scotland, you'll repay only £146.25 that year (9% of £1,625). That's just £12 a month.
- Payments are deducted automatically from your salary.

To be eligible, you must:

- be resident in Northern Ireland or Scotland
- be studying for an eligible postgraduate qualification.

Self-funded study

If you're not eligible for loan or grant funding or you live outside the UK, we offer a range of other funding options.

OUSBA loan

Pay your fees in instalments with a loan from Open University Student Budget Accounts Ltd. See right for more information.

Card payments

Pay for each module with a debit or credit card in one quick, simple payment.

Mixed payments

Combine your payment options to fund your studies the way you want.

Other support

Carers' Bursary¹

If you provide unpaid care for a friend or family member who cannot cope without your support, you may be eligible for a bursary of £250 to support you with your study costs.

Care Experienced Bursary¹

If you have been in the care of a Local Authority at any stage of your life, you may be eligible for a bursary of £250 to support you with your study costs.

Creative Writing Scholarship¹

If you identify as being from a Black background, you could be eligible to study our MA in Creative Writing for free.

Disabled Students' Allowance¹

You could access financial support towards study costs incurred as a result of your disability.

Employer sponsorship

Your employer could partially or fully pay for your module fees.

Grant funding

We offer access to a database of over 600 non-OU funding bodies offering grants for postgraduate students studying or looking to study, a masters, PGCE or research degree.

OU bursaries¹

Available only to OU honours graduates, our bursaries could help lower the cost of your postgraduate study.

Study-related costs¹

If you're on a low household income, or receive certain benefits, you might be eligible for additional funding for study-related costs, such as travel, childcare and internet access.

¹ UK residents only.

Open University Student Budget Account (OUSBA)

When you enrol with us, if you are resident in the UK, European Union, Switzerland, Norway, Iceland, Andorra, Liechtenstein, Monaco, San Marino or Vatican City State, you'll be offered the opportunity to pay your fees through a loan from OUSBA.

Here's how it works

OUSBA will pay your fees to The Open University. You can then choose to repay OUSBA in either of the following ways:

- in a single sum before your course starts. There's no interest to pay with this option
- in monthly instalments of up to a year. With this option, interest does apply.

The interest rate is fixed for the duration of the course (representative APR 5.1%). If you're worried about affordability or a poor credit history, you can apply for a joint loan application with a third party. This could be with a partner, sibling or friend, for example.

As a responsible lender, OUSBA carries out affordability checks as part of the application process.

To find out more about OUSBA, visit openuniversity.co.uk/ousba.

Find out more

Find out more about postgraduate fees and funding.



Visit
openuniversity.co.uk/pg-fees
Call
0300 303 5303



Find your undergraduate course

You can register for the 2023/2024 academic year for undergraduate qualifications from 15 March 2023.

We've based the qualification start dates on the first module(s) you can study as part of your qualification.

Health and social care

BA (Hons) Health and Social Care (R26)	24
BSc (Hons) Healthcare and Health Science (Q96)	26
BSc (Hons) Public Health and Wellbeing (R64)	28
Diploma of Higher Education in Social Care (Scotland) (W31)	30
Certificate of Higher Education in Children and Families (T24)	32
Certificate of Higher Education in Health, Wellbeing and Social Care (T52)	34
Certificate of Higher Education in Social Care (T39)	36
Certificate of Higher Education in Social Care (Scotland) (T03)	36
Certificate of Higher Education in Social Care Practice (Wales) (T34)	38
Certificate in Health and Social Care (S33)	39

Nursing and healthcare practice

BSc (Hons) Nursing (R39)	40
Foundation Degree in Nursing Associate Practice (X20)	42
Certificate of Higher Education in Healthcare Practice (T01)	44

Social work

BA (Hons) Social Work (England) (Q32)	46
BA (Hons) Social Work (Northern Ireland) (R61)	48
BA (Hons) Social Work (Scotland) (Q41)	50
BA (Hons) Social Work (Wales) (Q42)	52

Health sciences

BSc (Hons) Health Sciences (Q71)	54
----------------------------------	----

Open degree

BA/BSc (Hons) Open (QD)	56
-------------------------	----



BA (Hons) Health and Social Care

This degree provides you with the sound and critical understanding of health and social care essential in today's fast-changing care sector.

Health and social care professionals at all levels need to be proactive and flexible to succeed. With this degree, you'll gain the skills you need for effective practice in a diverse, multidisciplinary environment. It'll help you build a foundation for effective management and leadership in the health and social care sector.

Throughout your studies, you'll learn how ethical, legal, social, economic and political factors influence the provision and development of services. You will develop the critical and analytical skills that underpin evidence-based practice. You'll also explore new theories examining health and wellbeing in the 21st century, learning to challenge concepts you may have previously taken for granted.

By the end of your studies, you'll be able to evaluate your own and others' roles in the context of policy developments, assess emerging strategic solutions, and recognise and value diversity and difference.

Why this qualification?

- Encounter exciting new ideas and apply them to real life issues and situations that affect us all.
- Teaching based on our internationally recognised research into care issues across the lifecourse.
- Explore the context and processes of change and new ways of working across agencies and professional boundaries.
- Develop as an independent and reflective learner.

91% of students are satisfied with their course when studying Health and Social Care with us. Our high quality online content and tutor support ensure student success.

Related qualification

Diploma of Higher Education in Health and Social Care (W69)
openuniversity.co.uk/w69

Qualification structure

Stage 1 – 120 credits	<p><i>Introducing health and social care</i> (K102) (60 credits)</p>	<p>■ Compulsory modules</p>
	<p>Choose 60 credits from: <i>Foundations for social care and social work practice</i> (K123) (60 credits) OR <i>Introduction to childhood studies and child psychology</i> (E104) (60 credits) OR <i>Wellbeing across the lifecourse</i> (K119) (60 credits)</p>	<p>■ Option modules</p> <p><input type="checkbox"/> Intermediate qualification</p> <p>■ Awarded qualification</p>
Stage 2 – 120 credits	<p><i>Critical issues in health and wellbeing</i> (K219) (60 credits)</p>	
	<p>Choose 60 credits from: <i>Death, dying and bereavement</i> (K220) (60 credits) OR <i>Making a difference: working with children and young people</i> (KE206) (60 credits) OR <i>Mental health and community</i> (K240) (60 credits)</p>	
<p>Diploma of Higher Education in Health and Social Care (W69)</p>		
Stage 3 – 120 credits	<p><i>Leading, managing, caring</i> (K318) (60 credits)</p>	
	<p>Choose 60 credits from: <i>Approaches to mental health</i> (K314) (60 credits) OR <i>Investigating health and social care</i> (K323) (60 credits) OR <i>Public health: health promotion and health security</i> (K310) (60 credits) OR <i>Young lives, parenting and families</i> (KE322) (60 credits)</p>	
<p>BA (Hons) Health and Social Care</p>		

Qualification delivery, module availability and qualification structure are subject to change.

At a glance

Course code R26

Total credits 360

Start dates

Oct 2023

Register by 7 Sep 2023

Feb 2024

Register by 11 Jan 2024

Assessment

Based on a mix of:

- Tutor-marked assignments
- Interactive computer-marked assignments
- End-of-module assessments

Study duration

Part time: 6 years

Full time: 3 years

Mode of study

The learning materials provided are **mostly online with some print**

Electronic versions of printed materials available (e.g. PDF) ✓

Online forum **Optional** ✓

Collaborative work **Optional** ✓

Practice-based learning ✗

More online

Find out more about this course, fees and funding, and how to register.



Visit
openuniversity.co.uk/r26
 Call
0300 303 5303



BSc (Hons) Healthcare and Health Science

Develop essential skills required for working in health and health science settings, giving you the ability to apply evidence-based scientific methodology to health-related issues.

Through a combination of healthcare and health science topics, you'll develop a broad understanding of the range of debates surrounding the provision of healthcare.

By exploring the experience of receiving care and working in the care services, and examining human health by focusing on particular health conditions, you'll identify the key factors which influence health. Ultimately, you'll learn to apply your understanding to a range of public health issues.

You'll also learn to evaluate the relationship between scientific and social understandings about the promotion of health.

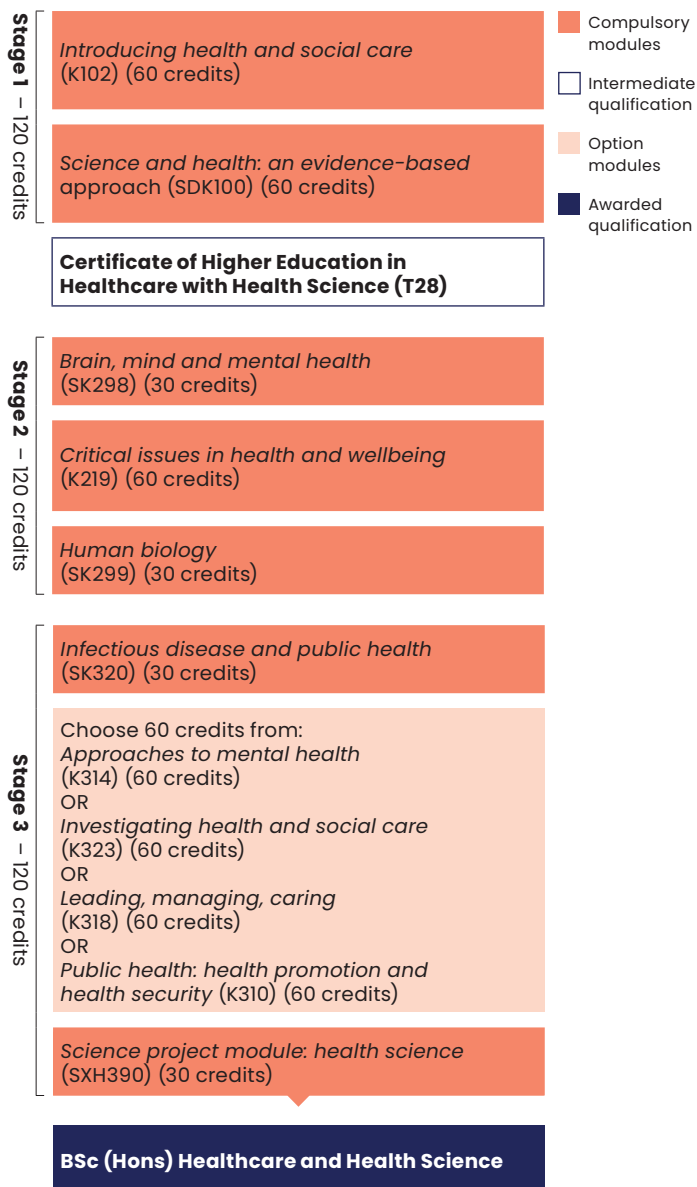
Why this qualification?

- Develop a range of skills in interpreting, generating, and presenting information using a unique blend of learning materials.
- Learn about the ethical, social, scientific, economic and political issues that influence health and healthcare.
- Engage with an evidence-based, scientific approach to health sciences and gain an appreciation of the limits of scientific knowledge.
- Critically evaluate approaches to service provision and develop strategies for improving practice.

Related qualification

Certificate of Higher Education in Healthcare with Health Science (T28)
openuniversity.co.uk/t28

Qualification structure



Qualification delivery, module availability and qualification structure are subject to change.

At a glance

Course code Q96

Total credits 360

Start dates

Oct 2023

Register by 7 Sep 2023

Feb 2024

Register by 11 Jan 2024

Assessment

Based on a mix of:

- Tutor-marked assignments
- Interactive computer-marked assignments
- End-of-module assessments
- Examinations

Study duration

Part time: 6 years

Full time: 3 years

Mode of study

The learning materials provided are **mostly online with some print**

Electronic versions of printed materials available (e.g. PDF) ✓

Online forum **Optional** ✓

Collaborative work **Optional** ✓

Practice-based learning ✗

More online

Find out more about this course, fees and funding, and how to register



Visit
openuniversity.co.uk/q96
 Call
0300 303 5303



BSc (Hons) Public Health and Wellbeing

Gain a sound and critical understanding of public health and wellbeing and how a concern for public health can lead to wellbeing.

You'll examine the origins and focus of public health and its policy and practice aims, and consider the different issues associated with the epidemiology of different diseases, for example, COVID-19. You'll also explore how public health practice can prevent ill-health associated with non-communicable diseases, for example, obesity or chronic obstructive pulmonary disease (COPD). You'll study how the social determinants of health and illness lead to inequalities and inequities in the distribution of ill-health across a population. This will lead to consideration of evidenced-based remedies and interventions aimed at individual and communal wellbeing.

The area of public health is rapidly developing. Healthcare professionals at all levels need to be proactive and flexible to succeed, and through your studies you'll gain the skills needed for effective practice in a diverse, multidisciplinary environment. You will learn about the United Kingdom Public Health Register (UKPHR) and how its standards contribute to being a public health practitioner. And you'll learn how ethical, legal, social, economic and political factors influence the provision and development of services, while developing the critical and analytical skills that underpin evidence-based practice.

Why this qualification?

- Explore a rapidly developing area of health and social care.
- Consider the issues surrounding both infectious and non-communicable diseases.
- Critically evaluate how inequalities in society impact individual and community health.
- Learn about the ethical, legal, economic and political issues that influence healthcare provision.

Related qualification

Graduate Certificate
in Public Health (S06)
openuniversity.co.uk/s06

Qualification structure

Stage 1 – 120 credits	<p>Introducing health and social care (K102) (60 credits) OR Science and health: an evidenced-based approach (SDK100) (60 credits)</p>	Option modules
	Wellbeing across the lifecourse (K119) (60 credits)	Compulsory modules
Stage 2 – 120 credits	A new module on the critical issues in public health and wellbeing – planned for October 2024 (60 credits)	Awarded qualification
	<p>Choose 60 credits from: Death, dying and bereavement (K220) (60 credits) OR Making a difference: working with children and young people (KE206) (60 credits) OR Mental health and community (K240) (60 credits) OR Brain, mind and mental health (SK298) (30 credits) AND Human biology (SK299) (30 credits)</p>	
Stage 3 – 120 credits	Public health: health promotion and health security (K310) (60 credits)	
	Investigating health and social care (K323) (60 credits)	
<p>BSc (Hons) Public Health and Wellbeing</p>		

Qualification delivery, module availability and qualification structure are subject to change.

At a glance

Course code R64

Total credits 360

Start date
Oct 2023
Register by 7 Sep 2023

Assessment
Based on a mix of:

- Tutor-marked assignments
- Interactive computer-marked assignments
- End-of-module assessments
- Examinations

Study duration
Part time: 6 years
Full time: 3 years

Mode of study
The learning materials provided are **mostly online with some print**

Electronic versions of printed materials available (e.g. PDF) ✓

Online forum **Optional** ✓

Collaborative work **Optional** ✓

Practice-based learning ✗

More online

Find out more about this course, fees and funding, and how to register.



Visit
openuniversity.co.uk/r64
Call
0300 303 5303



Diploma of Higher Education in Social Care (Scotland)

Social care in Scotland is increasingly multidisciplinary and community focused – requiring a skilled, adaptable workforce to deliver high-quality services.

This diploma will deepen your insight of social care and social work, developing the knowledge and skills you need to support vulnerable adults and children effectively in multiple settings.

It places a strong emphasis on working across professional boundaries, with service users placed firmly at the centre. You'll gain an up-to-date and authoritative overview of care services, drawing on real-life case studies with children, older people, mental health communities and people with learning disabilities.

If you're interested in a similar diploma but live outside Scotland, you may also be interested in our Diploma of Higher Education in Health and Social Care (W69) – visit openuniversity.co.uk/w69 for more information.

Why this qualification?

- Explore key roles, standards and codes of practice.
- Focus on particular areas relevant to your own role.
- Build a solid foundation for further study.

Entry requirements

There are no formal entry requirements to study this diploma, but you need to be working in, or have access to, a social care agency, for example, through voluntary work.

Qualification structure

Stage 1 – 120 credits

Introducing health and social care (K102) (60 credits)

Foundations for social care and social work practice (K123) (60 credits)

Compulsory modules

Option modules

Awarded qualification

Stage 2 – 120 credits

Choose 120 credits from:

Critical issues in health and wellbeing (K219) (60 credits)

Death, dying and bereavement (K220) (60 credits)

*Making a difference: working with children and young people*¹ (KE206) (60 credits)

Mental health and community (K240) (60 credits)

*Social work law*¹ (K271) (60 credits)

Diploma of Higher Education in Social Care (Scotland)

Qualification delivery, module availability and qualification structure are subject to change.

¹ These modules are compulsory in the BA (Hons) Social Work (Scotland) (Q41). If you are intending to seek entry into the degree, you should opt for these.

At a glance

Course code W31

Total credits 240

Start dates

Oct 2023

Register by 7 Sep 2023

Feb 2024

Register by 11 Jan 2024

Assessment

Based on a mix of:

- Tutor-marked assignments
- Interactive computer-marked assignments
- End-of-module assessments

Study duration

Part time: 4 years

Full time: 2 years

Mode of study

The learning materials provided are **a balance of print and online**

Electronic versions of printed materials available (e.g. PDF) ✓

Online forum **Optional** ✓

Collaborative work **Optional** ✓

Practice-based learning ✓

Don't stop there

You can choose modules in this diploma to carry forward to the **BA (Hons) Social Work (Scotland) (Q41)** - see page 50. Please note that completing the diploma does not give automatic entry to the social work degree, which is subject to an interview process and meeting minimum entry requirements.

More online

Find out more about this course, fees and funding, and how to register.



Visit
openuniversity.co.uk/w31
Call
0300 303 5303



Certificate of Higher Education in Children and Families

Ideal if you want to develop your interest in health and social care in the area of working with children, young people and families.

If you're directly engaged in this area (or hope to be) as a paid or unpaid worker or carer, this certificate provides you with a solid foundation of knowledge to build upon.

You'll be introduced to issues relating to the welfare of children and young people, including how health and social care services and practices are organised. You'll also acquire valuable knowledge and understanding about childhood, child development and children's rights that can be applied to work in a variety of health and social care contexts.

Why this qualification?

- Investigate key issues and debates about childhood, child development, child psychology and children's rights.
- Apply your knowledge and understanding to your own life or work environment.
- Build a solid foundation for further study.

Qualification structure

Stage 1 – 120 credits

Introducing health and social care (K102) (60 credits)

Compulsory modules

Awarded qualification

Introduction to childhood studies and child psychology (E104) (60 credits)

Certificate of Higher Education in Children and Families

Qualification delivery, module availability and qualification structure are subject to change.

At a glance

Course code T24

Total credits 120

Start dates

Oct 2023

Register by 7 Sep 2023

Feb 2024

Register by 11 Jan 2024

Assessment

Based on a mix of:

- Tutor-marked assignments
- End-of-module assessments

Study duration

Part time: 2 years

Full time: 1 year

Mode of study

The learning materials provided are **mostly online with some print**

Electronic versions of printed materials available (e.g. PDF) ✓

Online forum **Optional** ✓

Collaborative work **Optional** ✓

Practice-based learning ✗

More online

Find out more about this course, fees and funding, and how to register.



Visit
openuniversity.co.uk/t24
Call
0300 303 5303





Certificate of Higher Education in Health, Wellbeing and Social Care

Explore some key issues surrounding health and social care, including public health.

Gain an authoritative overview of the current context of health and social care for children, young people, and adults of all ages using real-life case studies to explore a wide range of interesting issues and debates.

If you work in health and social care, including public health, use services yourself, or would simply like to find out more about how to support the wellbeing of children, young people or adults in our society and care systems, this certificate is for you.

Why this qualification?

- Deepen your knowledge and understanding of health and social care, including public health.
- Apply theories to help you understand real-life case studies.
- Develop practical and employability skills.
- Build a solid foundation for further study in this sector.

Qualification structure

Stage 1 – 120 credits

Introducing health and social care
(K102) (60 credits)

Compulsory modules

Awarded qualification

Wellbeing across the lifecourse
(K119) (60 credits)

Certificate Of Higher Education in Health, Wellbeing and Social Care

Qualification delivery, module availability and qualification structure are subject to change.

At a glance

Course code T52

Total credits 120

Start dates

Oct 2023

Register by 7 Sep 2023

Feb 2024

Register by 11 Jan 2024

Assessment

Based on a mix of:

- Tutor-marked assignments
- Interactive computer-marked assignments
- End-of-module assessments

Study duration

Part time: 2 years

Full time: 1 year

Mode of study

The learning materials provided are **mostly online with some print**

Electronic versions of printed materials available (e.g. PDF) ✓

Online forum **Optional** ✓

Collaborative work **Optional** ✓

Practice-based learning ✗

More online

Find out more about this course, fees and funding, and how to register.



Visit
openuniversity.co.uk/t52
Call
0300 303 5303





Certificate of Higher Education in Social Care

Explore ideas about what social work is with a certificate in social care from the OU.

You'll use case studies with children, older people, mental health communities, children with disabilities and people with learning disabilities to apply learning to practice contexts.

In addition to providing an excellent introduction to social work and social care, the modules in these certificates form the first stages of some qualifying social work degrees.

Completing the certificate does not give automatic entry to a social work degree, which is subject to an interview process and meeting minimum entry or funding requirements. See the relevant qualification page for more details:

- BA (Hons) Social Work (England) (Q32) – see pg 46.
- BA (Hons) Social Work (Northern Ireland) – see pg 48.
- BA (Hons) Social Work (Scotland) (Q41) – see pg 50.
- If you live in Wales, we also offer a Certificate of Higher Education in Social Care Practice (Wales), see pg 38.

Why this qualification?

- Apply your learning to your professional social work practice.
- Use real-life case studies to aid learning.
- Build key skills in information and communication technologies, digital and information literacy and reflective writing.
- Potential first step towards an honours degree in social work.

Qualification structure

Stage 1 – 120 credits

Introducing health and social care
(K102) (60 credits)

*Foundations for social care and social
work practice* (K123) (60 credits)

- Compulsory modules
- Awarded qualification

**Certificate of Higher
Education in Social
Care (T39)**

**Certificate of Higher
Education in Social
Care (Scotland) (T03)**

Qualification delivery, module availability and qualification structure are subject to change.

At a glance

Course code T39
T03

Total credits 120

Start dates

Oct 2023
Register by 7 Sep 2023

Feb 2024
Register by 11 Jan 2024

Entry requirements

There are no formal entry requirements to study this certificate, but you will need to be working within, or have access to, a social care agency, for example, through voluntary work.

Assessment

Based on a mix of:

- Tutor-marked assignments
- Interactive computer-marked assignments
- End-of-module assessments

Study duration

Part time: 2 years
Full time: 1 year

Mode of study

The learning materials provided are **mostly online with some print**

Electronic versions of printed materials available (e.g. PDF) ✓

Online forum **Optional** ✓

Collaborative work **Compulsory** ✓

Practice-based learning ✓

More online

Find out more about this course, fees and funding, and how to register.



Visit
**openuniversity.
co.uk/social-
care**
Call
0300 303 5303



Certificate of Higher Education in Social Care Practice (Wales)

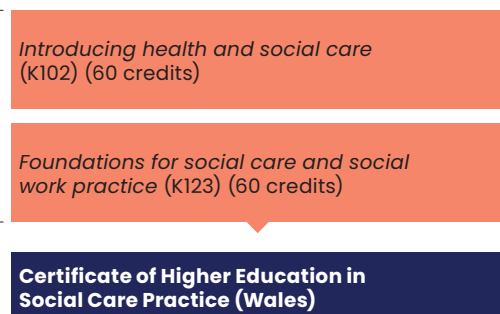
Explore key ideas about social work in Wales.

In this certificate, you'll use case studies with children, older people, mental health communities, children with disabilities and people with learning disabilities to develop knowledge and apply learning to practice contexts. It is recognised by Social Care Wales as meeting the needs of social care workers involved in case assessments and giving information on access to services.

It also forms the first stage of our BA (Hons) Social Work (Wales) (Q42). Completing this certificate does not give automatic entry to this degree, which is subject to an interview process and meeting minimum entry or funding requirements. See page 52 for details.

Qualification structure

Stage 1 – 120 credits



Why this qualification?

- Consider the nature of social work and social care, and apply learning to practice.
- Build key skills in information and communication technologies, digital and information literacy and reflective writing.
- Support and encouragement if you want to use Welsh in your studies.
- Recognised by Social Care Wales.

At a glance

Course code T34

Total credits 120

Start dates

Oct 2023

Register by 7 Sep 2023

Feb 2024

Register by 11 Jan 2024

Entry requirements

There are no formal entry requirements to study this certificate, but you will need to be working within, or have access to, a social care agency, for example, through voluntary work.

Assessment

Based on a mix of:

- Tutor-marked assignments
- Interactive computer-marked assignments
- End-of-module assessments

Study duration

Part time: 2 years

Full time: 1 year

Mode of study

The learning materials provided are **mostly online with some print**

Electronic versions of printed materials available (e.g. PDF) ✓

Online forum **Optional** ✓

Collaborative work **Compulsory** ✓

Practice-based learning ✓

More online

Find out more about this course, fees and funding, and how to register.



Visit
openuniversity.co.uk/t34
Call
0300 303 5303

Qualification delivery, module availability and qualification structure are subject to change.

Certificate in Health and Social Care

This certificate is focused on providing a valuable introduction to learning in higher education and an authoritative overview of health and social care.

Real-life case studies will give you an insight into what it is like to experience care, and to work in care services. Whether you're involved in care work (paid or unpaid), use services yourself, or simply have a general interest, this course helps you build knowledge, understanding, a range of learning skills, as well as preparing you for further study.

Why this qualification?

- Gain a fascinating insight into the provision of health and social care services in the UK.
- Draw on your own ideas and experiences.
- An introduction to the essential skills of academic study.

Qualification structure



Qualification delivery, module availability and qualification structure are subject to change.

At a glance

Course code S33

Total credits 60

Start dates

Oct 2023
Register by 7 Sep 2023

Feb 2024
Register by 11 Jan 2024

Entry requirements

No specific requirements

Assessment

Based on a mix of:

- Tutor-marked assignments
- End-of-module assessments

Study duration

Part time: 8 months

Mode of study

The learning materials provided are **mostly online with some print**

Electronic versions of printed materials available (e.g. PDF) ✓

Online forum **Optional** ✓

Collaborative work **Optional** ✓

Practice-based learning ✗

More online

Find out more about this course, fees and funding, and how to register.



Visit
openuniversity.co.uk/s33
Call
0300 303 5303



BSc (Hons) Nursing

A flexible practice-based learning route to qualify as a registered nurse approved by the Nursing and Midwifery Council (NMC).

The degree addresses the Nursing and Midwifery Council (NMC) requirements for entry to the nursing professional register. This makes it the ideal way for healthcare and support workers to qualify as a registered nurse, with a choice of fields of nursing practice:

- Adult
- Children and Young People
- Learning Disabilities
- Mental Health.

Through practice-based learning you'll develop the on-the-job experience and professional skills needed to deliver high-quality, safe and effective person-centred care for people with varied health needs, in a range of care settings.

Why this qualification?

- Develop effective evidence-based nursing practice and underpinning knowledge in an inter-professional and interdisciplinary environment.

- A balance of theory and practice delivered through practice-based and distance learning.
- Continue to work part time for your employer whilst studying; you don't need to put your career on hold.

Entry requirements

Entry is subject to an interview process and meeting the minimum entry requirements, visit openuniversity.co.uk/r39 for full details. You'll need to apply at least six months before your chosen start date.

Employer sponsorship

If you're currently working in a healthcare role you could continue to work while you study. You'll need the support of your employer and agree on suitable practice opportunities where registered practice supervisors and assessors are available.

Blended learning nursing programme

In some regions of England, you can study our BSc (Hons) Nursing (Adult) if you're not currently working in a healthcare role. You'll study theory online and gain practical experience at on-campus simulation labs or placements with local healthcare providers

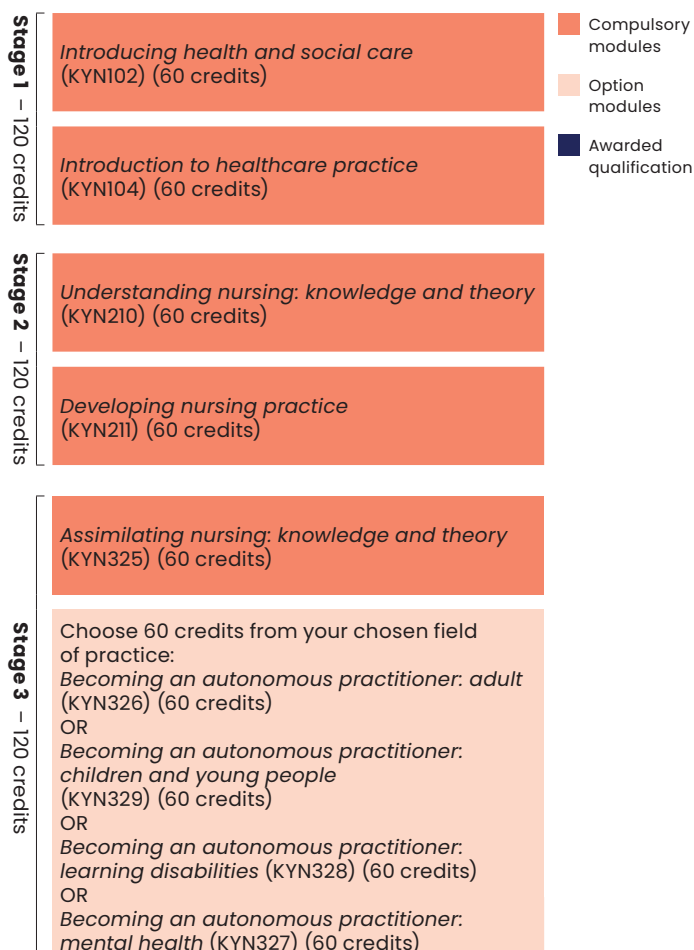
This is available with:

- Middlesex University
- Oxford University Hospitals NHS Foundation Trust
- University of the West of England

Apprenticeships

For information on higher and degree apprenticeships in Nursing in England, including the Registered Nurse Degree Apprenticeship, go to openuniversity.co.uk/apprenticeships or call **0300 303 0529**.

Qualification structure



Qualification delivery, module availability and qualification structure are subject to change.

¹ Your choice at Stage 3 will be reflected in your awarded degree, e.g. BSc (Hons) Nursing (Adult).

At a glance

Course code R39

Total credits 360

Start dates

Oct 2023

Feb 2024

For further information, go to **openuniversity.co.uk/r39**

Assessment

Based on a mix of:

- Tutor-marked assignments
- Interactive computer-marked assignments
- End-of-module assessments
- Practice assessment documents

Study duration

Flexible practice-based programme, 3-4 years depending on location of study and entry route

Mode of study

The learning materials provided are **mostly online with some print**

Electronic versions of printed materials available (e.g. PDF) ✓

Online forum **Compulsory** ✓

Collaborative work **Compulsory** ✓

Practice-based learning ✓

More online

Find out more about this course, fees and funding, and how to register.



Visit
openuniversity.co.uk/r39
Call
0300 303 0529

If you are entitled to take a Student Loan and Maintenance Grant then you may also be eligible for a NHS bursary. For further information, go to **gov.uk/nhs-bursaries**.



Foundation Degree in Nursing Associate Practice

Healthcare is increasingly complex and requires a highly qualified workforce. This foundation degree helps you to develop the knowledge and skills needed to deliver high quality, safe and compassionate care.

In England, the nursing associate role has been developed in response to workforce needs and acts as a bridge between healthcare support workers and registered nurses within healthcare teams.

During your studies, you'll experience at least two placements in alternative settings to your usual workplace, so you'll have experience providing care in hospitals, in settings close to home, and at home.

On successful completion of the foundation degree, you'll be able to register as a nursing associate with the Nursing and Midwifery Council (NMC).

Why this qualification?

- Enhance employability through a professionally regulated qualification.
- Study an IfATE-approved Higher Technical Qualification.
- Embed your learning through a balance of theory and practice-based learning.
- Essential preparation that underpins the knowledge and skills needed for the role of nursing associate.

Entry requirements

This foundation degree is only available in England. Entry is via interview and an assessment of numeracy and literacy skills. You must be employed by a partner organisation or supported by an NHS trust or other healthcare organisation that has agreed

to support your studies. This includes providing alternative practice placements and supervision in practice, meeting the NMC requirements for practice assessors and supervisors.

Apprenticeships

For information on higher and degree apprenticeships in Nursing in England, including the Higher Apprenticeship in Health (Nursing Associate), go to openuniversity.co.uk/apprenticeships or call **0300 303 0529**.



This is a Higher Technical Qualification approved by the Institute for Apprenticeships and Technical Education (IfATE) as meeting occupational standards for the nursing sector.

Qualification structure



Qualification delivery, module availability and qualification structure are subject to change.

At a glance

Course code X20

Total credits 240

Start dates

Oct 2023

Feb 2024

For further information, go to **openuniversity.co.uk/x20**

Assessment

Based on a mix of:

- Tutor-marked assignments
- Interactive computer-marked assignments
- End-of-module assessments
- Practice assessment documents

Study duration

Full time 2 years

Mode of study

The learning materials provided are **mostly online with some print**

- | | |
|---------------------------------------------------------------|---|
| Electronic versions of printed materials available (e.g. PDF) | ✓ |
| Online forum | ✓ |
| Compulsory | |
| Collaborative work | ✓ |
| Compulsory | |
| Practice-based learning | ✓ |

More online

Find out more about this course, fees and funding, and how to register.



Visit
openuniversity.co.uk/x20
Call
0300 303 0529





Certificate of Higher Education in Healthcare Practice

This certificate helps healthcare support staff develop the knowledge, skills and understanding needed to underpin effective practice.

You'll develop a wide range of practical skills and competencies, while exploring essential biological, social, political, ethical and psychological concepts. It includes a strong work-based element and you'll need the support of your employer to study. You'll also build valuable numeracy, literacy, ICT, communication and cognitive skills.

Why this qualification?

- Designed as the first step to prepare healthcare support workers for the role of assistant practitioner.
- Includes a strong practice-based element.
- Build a solid foundation for further study.

Entry requirements

There are no academic entry requirements, however, you must:

- Work in a healthcare setting for a minimum of two days per week and remain in employment while studying.
- Be involved in the direct delivery of care or providing interventions for patients/clients.

Your employer will need to provide significant supervision by a registered nurse for 770 practice hours and comprehensive programme support, so you'll also need the following to study:

- Confirmation of your employer's support for your studies.

- A workplace supervisor qualified in the same area of practice to support and assess your work-based learning.

For more details, visit openuniversity.co.uk/t01.

At a glance

Course code T01

Total credits 120

Start dates

Oct 2023

Register by 7 Sep 2023

Feb 2024

Register by 11 Jan 2024

Assessment

Based on a mix of:

- Tutor-marked assignments
- Interactive computer-marked assignments
- End-of-module assessment
- Practice assessment documents

Study duration

Flexible practice-based qualification, 1–2 years

Mode of study

The learning materials provided are **mostly online with some print**

Electronic versions of printed materials available (e.g. PDF) ✓

Online forum **Optional** ✓

Collaborative work ✗

Practice-based learning ✓

Qualification structure

Stage 1 – 120 credits

Introducing health and social care
(K102) (60 credits)

Introduction to healthcare practice
(K104) (60 credits)

Certificate of Higher Education in Healthcare Practice

Compulsory modules

Awarded qualification

Qualification delivery, module availability and qualification structure are subject to change.

Don't stop there

If you want to progress to nurse training, you may be able to count the credit gained from this qualification towards the **BSc (Hons) Nursing (R39)** – see page 40. Please note that completing this certificate does not give automatic entry to the nursing degree, which is subject to an interview process and meeting minimum entry requirements.

More online

Find out more about this course, fees and funding, and how to register.



Visit
openuniversity.co.uk/t01
Call
0300 303 5303



BA (Hons) Social Work (England)

The OU offers a work-based distance learning route to the degree in social work. Successful graduates are eligible to apply for registration as a qualified social worker with Social Work England (SWE).

With our employer partners we offer a different route into the profession. It's one that opens up a host of opportunities to people who, for one reason or another, require a more flexible and individualised approach to social work training.

While you study you'll receive extensive support from the OU, from programme tutors and practice educators who are committed to developing professional social workers, and from subject tutors who will support and guide you through the individual modules that make up the degree.

Why this qualification?

- Continue in your employment while you study, earning while you learn.
- Study through work-based and distance learning.
- Develop the knowledge and practical skills that underpin effective practice.
- Improve your career progression opportunities within social work.

Entry requirements

This degree is restricted to students working in social care in England and who are sponsored or supported by their employer. Admission is subject to an interview process and meeting minimum entry requirements.

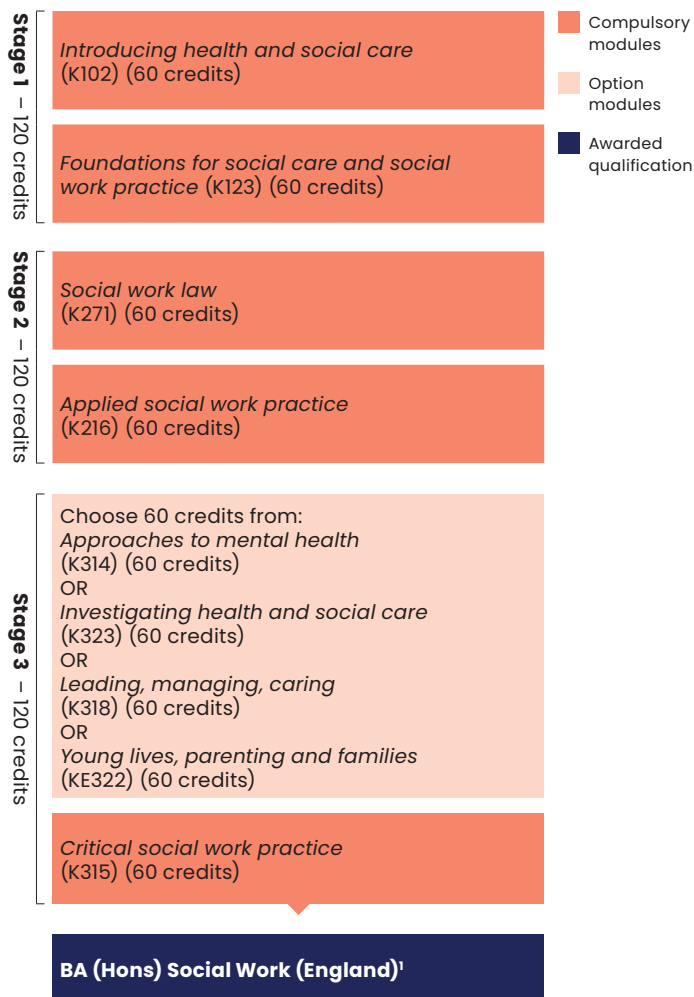
Social work employers

If you're a social work employer and would like more information about our social work qualifications, please email wels-sw-enquiries@open.ac.uk or call **01908 654 229**.

Apprenticeships

For information on the Social Worker Degree Apprenticeship, go to openuniversity.co.uk/apprenticeships or call **0300 303 0529**.

Qualification structure



Qualification delivery, module availability and qualification structure are subject to change.

¹ Subject to satisfactory demonstration and maintenance of standards for suitability and fitness for practice.

At a glance

Course code Q32

Total credits 360

Start dates

Oct 2023

Feb 2024

For further information, go to **openuniversity.co.uk/q32**

Assessment

Based on a mix of:

- Tutor-marked assignments
- Interactive computer-marked assignments
- End-of-module assessment
- Practice assessment

Study duration

Part time: 6 years

Full time: 3 years

Mode of study

The learning materials provided are **a balance of print and online**

Electronic versions of printed materials available (e.g. PDF) ✓

Online forum **Optional** ✓

Collaborative work **Compulsory** ✓

Practice-based learning ✓

More online

Find out more about this course, fees and funding, and how to register.



Visit
openuniversity.co.uk/q32
Call
0300 303 0529



BA (Hons) Social Work (Northern Ireland)

The OU offers a work-based distance learning route to the degree in social work. Successful graduates are eligible to apply for registration as a qualified social worker with the Northern Ireland Social Care Council (NISCC).

With our employer partners we offer a different route into the profession. It's one that opens up a host of opportunities to people who, for one reason or another, require a more flexible and individualised approach to social work training.

While you study you'll receive extensive support from the OU, from programme tutors and practice educators who are committed to developing professional social workers, and from subject tutors who will support and guide you through the individual modules that make up the degree.

Why this qualification?

- Continue in your employment while you study, earning while you learn.
- Study through work-based and distance learning.
- Develop the knowledge and practical skills that underpin effective practice.
- Improve your career progression opportunities within social work.

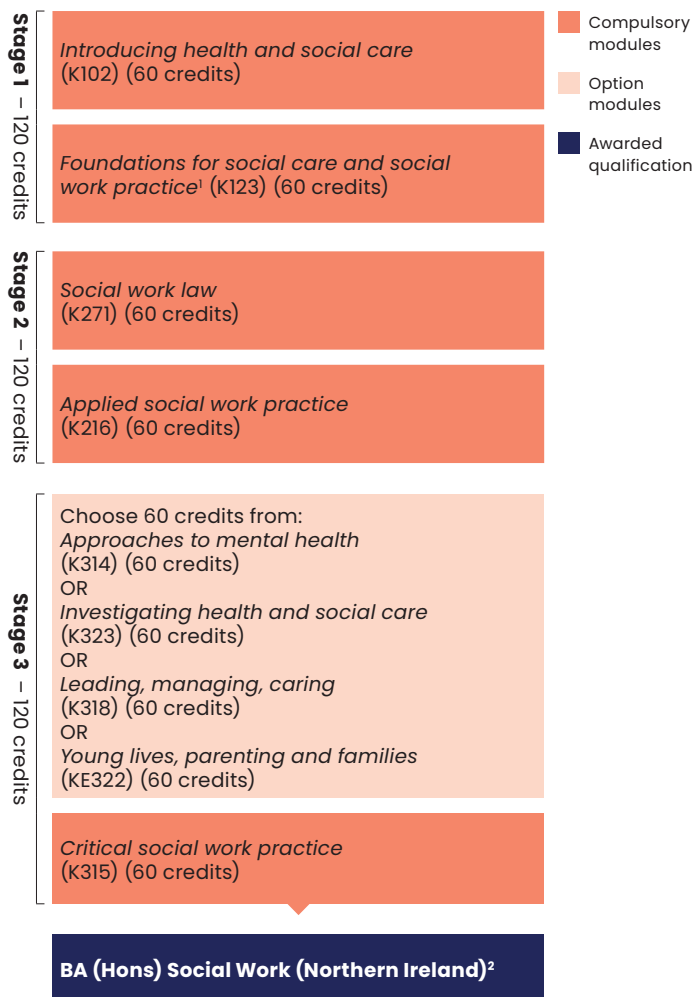
Entry requirements

This degree is restricted to students working in social care in Northern Ireland and places are funded by the Department of Health. To join the programme, you'll need to be sponsored and supported by your employer and you must be in receipt of a Department of Health funded place, which will cover your module fees as you study. Admission is subject to an interview process and meeting minimum entry requirements. To find out more, visit openuniversity.ac.uk/r61.

Social work employers

If you're a social work employer and would like more information about our social work qualifications please contact the social work team in Northern Ireland on **02890 245025** or email ireland-social-work@open.ac.uk.

Qualification structure



Qualification delivery, module availability and qualification structure are subject to change.

¹ Subject to approval

² Subject to satisfactory demonstration and maintenance of standards for suitability and fitness for practice.

At a glance

Course code R61

Total credits 360

Start dates

Oct 2023

For further information, go to **openuniversity.co.uk/r61**

Assessment

Based on a mix of:

- Tutor-marked assignments
- Interactive computer-marked assignments
- End-of-module assessment
- Practice assessment

Study duration

Part time: 6 years

Full time: 3 years

Mode of study

The learning materials provided are **a balance of print and online**

Electronic versions of printed materials available (e.g. PDF) ✓

Online forum **Optional** ✓

Collaborative work **Compulsory** ✓

Practice-based learning ✓

More online

Find out more about this course, fees and funding, and how to register.



Visit
openuniversity.co.uk/r61
Call
0300 303 5303



BA (Hons) Social Work (Scotland)

The Open University offers a work-based distance learning route to the degree in social work, and eligibility for registration with the Scottish Social Services Council (SSSC) upon completion. This programme is approved by the SSSC.

The degree programme is available to staff who are working in social care, are sponsored and supported by their employer or who meet the selection criteria for the independent (non-sponsored) route.

Why this qualification?

- Continue in your employment while you study, earning while you learn.
- Study through work-based and distance learning.
- Develop the knowledge and practical skills that underpin effective practice.
- Improve your career progression opportunities within social work.

Entry requirements

Employer Sponsorship

You'll need to be working in social care in Scotland. You should be sponsored or supported by your employer. Admission is subject to an interview process and meeting minimum entry requirements.

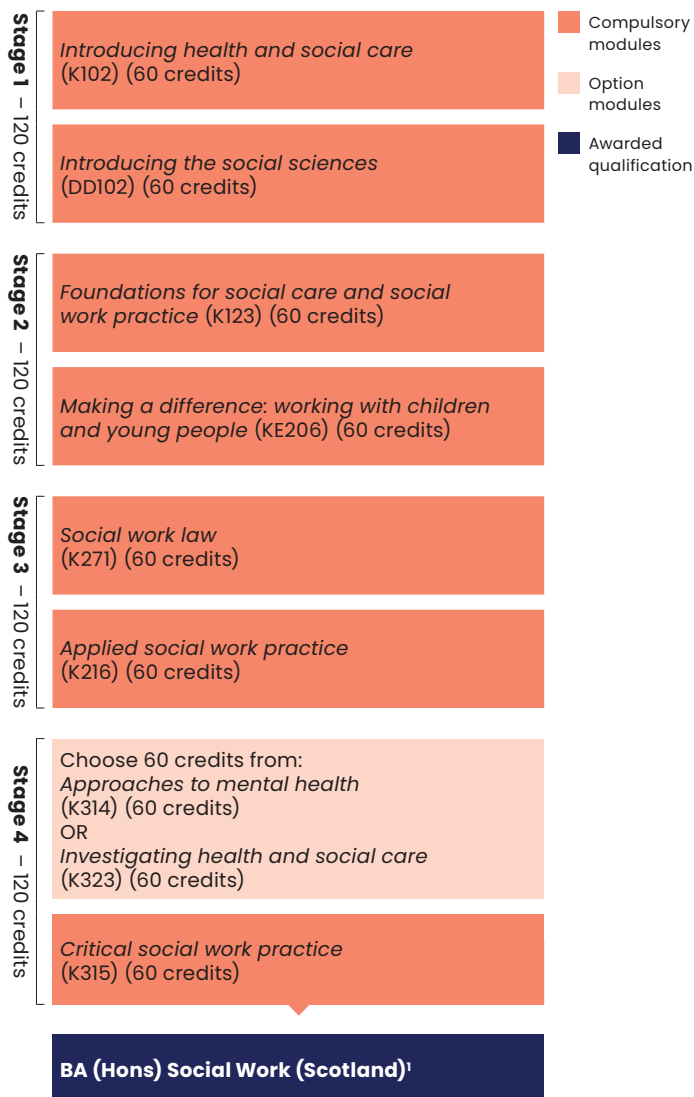
Non-sponsored route

Individuals can also apply if they meet the selection criteria and are selected for the degree. If you're not currently in suitable employment, a good first step would be to study one of the Stage 1 modules in the programme, *Introducing health and social care* (K102) or *Introducing the social sciences* (DD102), which are available for standalone study and do not require employer sponsorship.

For full details of all entry requirements, visit openuniversity.co.uk/q41.

Employing agencies and individuals who are interested in this degree should contact the Social Work Co-ordinator at The Open University in Scotland on **0131 226 3851** or email scotland@open.ac.uk.

Qualification structure



Qualification delivery, module availability and qualification structure are subject to change.

¹ Subject to satisfactory demonstration and maintenance of standards for suitability and fitness for practice.

At a glance

Course code Q41

Total credits 480

Start dates

Oct 2023

Feb 2024

For further information, go to openuniversity.co.uk/q41

Assessment

Based on a mix of:

- Tutor-marked assignments
- Interactive computer-marked assignments
- End-of-module assessment
- Practice assessment

Study duration

Part time: 8 years

Full time: 4 years

Mode of study

The learning materials provided are **mostly online with some print**

Electronic versions of printed materials available (e.g. PDF) ✓

Online forum **Optional** ✓

Collaborative work **Compulsory** ✓

Practice-based learning ✓

More online

Find out more about this course, fees and funding, and how to register.



Visit
openuniversity.co.uk/q41
Call
0300 303 5303



BA (Hons) Social Work (Wales)

The Open University offers a distance learning, work-based route to the degree in social work. The programme is approved by Social Care Wales (SCW) and graduates are eligible to apply for registration with SCW as a qualified social worker.

The degree programme is available to staff who are working in social care, and are supported by their employer, or who meet the selection criteria for the independent route and are selected onto the degree to join at Stage 2.

The programme is provided in partnership with employers in Wales, who take an active part in monitoring the work of the programme and in developing new initiatives to widen opportunities and support students.

People who use services and carers also take an active part in the development, management and delivery of the programme, bringing their own expertise developed through personal experience.

Why this qualification?

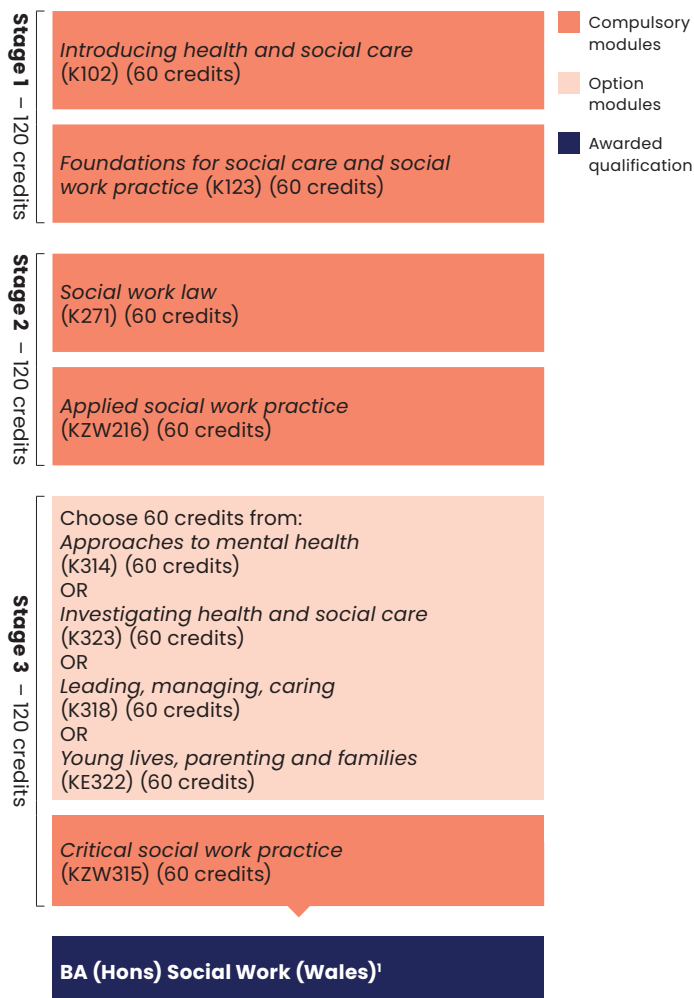
- Continue in your employment while you study, earning while you learn.
- Study through work-based and distance learning.
- Develop the knowledge and practical skills that underpin effective practice.
- Improve your career progression opportunities within social work.

Entry requirements

This degree is restricted to students working or volunteering in social care in Wales. There are two routes into the degree, depending on whether you are being sponsored by your employer or studying independently. Admission is subject to an interview process and meeting minimum entry requirements.

Employing agencies and individuals who are interested in this degree should contact The Open University in Wales on **029 2047 1170** or email **wales-social-work@open.ac.uk**.

Qualification structure



¹ Subject to satisfactory demonstration and maintenance of standards for suitability and fitness for practice.

At a glance

Course code Q42

Total credits 360

Start dates

Oct 2023

Feb 2024

For further information, go to **openuniversity.co.uk/q42**

Assessment

Based on a mix of:

- Tutor-marked assignments
- Interactive computer-marked assignments
- End-of-module assessment
- Practice assessment

Study duration

Part time: 6 years

Full time: 3 years

Mode of study

The learning materials provided are **mostly online with some print**

Electronic versions of printed materials available (e.g. PDF) ✓

Online forum **Compulsory** ✓

Collaborative work **Optional** ✓

Practice-based learning ✓

More online

Find out more about this course, fees and funding, and how to register.



Visit
openuniversity.co.uk/q42
 Call
0300 303 5303



BSc (Hons) Health Sciences

This degree examines the science behind health, from individual health to global issues like epidemics or the treatment of dementia.

You'll study the science that underpins the function of the human mind and body. Explore the incidence, diagnosis and treatment of disease and disability, and examine the maintenance and improvement of health in different populations.

This course is particularly relevant if you work in a health-related profession or aspire to work in one.

Why this qualification?

- Explore health and disease from a multidisciplinary, evidence-based perspective.
- Develop investigative and laboratory skills using our award-winning OpenSTEM labs.
- Gain transferable skills to enhance your employability in healthcare, health research and other settings.

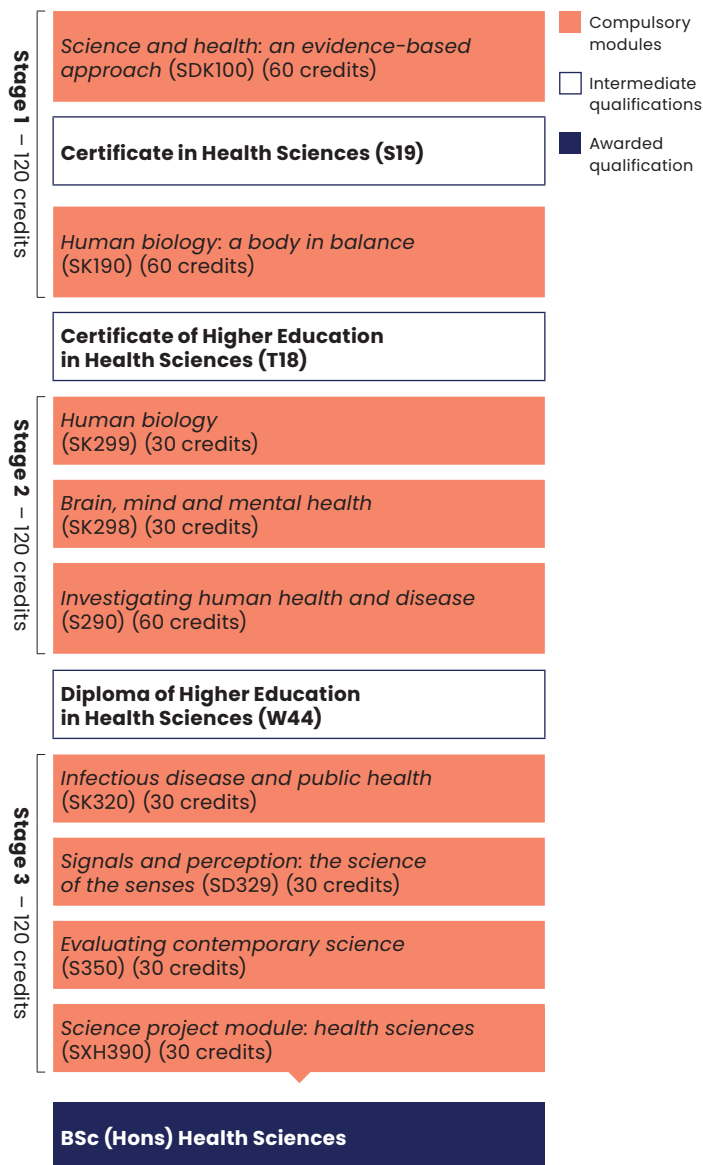
Related qualifications

Diploma of Higher Education in Health Sciences (W44)
openuniversity.co.uk/w44

Certificate of Higher Education in Health Sciences (T18)
openuniversity.co.uk/t18

Certificate in Health Sciences (S19)
openuniversity.co.uk/s19

Qualification structure



Qualification delivery, module availability and qualification structure are subject to change.

At a glance

Course code Q71

Total credits 360

Start dates

Oct 2023

Register by 7 Sep 2023

Feb 2024

Register by 11 Jan 2024

Entry requirements

No specific requirements

Assessment

Based on a mix of:

- Tutor-marked assignments
- Interactive computer-marked assignments
- End-of-module assessments
- Examinations

Study duration

Part time: 6 years

Full time: 3 years

Mode of study

The learning materials provided are **mostly online with some print**

Electronic versions of printed materials available (e.g. PDF) ✓

Online forum **Optional** ✓

Collaborative work **Compulsory** ✓

Practice-based learning ✗

More online

Find out more about this course, fees and funding, and how to register.



Visit
openuniversity.co.uk/q71
Call
0300 303 5303



BA/BSc (Hons) Open

Do you want the freedom to study a range of subjects that interest you? Then our Open qualifications are ideal.

Some of the key questions in the world today require expertise from a range of subjects. Multidisciplinary study has always been at the heart of The Open University and our Open qualifications allow you to bring together different areas of study in a completely flexible way to develop knowledge and skills.

The BA/BSc (Hons) Open allows you to choose modules from a wide range of subject areas so you can, for example, combine health and social care modules with modules from other disciplines, such as science or humanities. It is a degree with a difference. Free from the restriction of a subject-specific specialism, you're in control of the direction of your learning.

Why this qualification?

- Tailor your qualification to suit your needs.
- Create your own unique multidisciplinary degree and skill set.

- Adapt your study plans to match your evolving aspirations.
- Count previous university study towards your qualification.

Open qualifications and your career

Our Open qualifications equip you with a wide range of expertise, skills and capabilities through multidisciplinary study. These qualities are sought after in today's highly competitive job market. An Open qualification on your CV shows more than your level of knowledge about a subject; employers know that you are flexible and adaptable, potentially having studied across a range of topics. You'll have a highly employable set of skills and attributes, including:

- self-management and resilience
- critical thinking
- analysis and problem solving.



The fact that the OU has the option of choosing an Open degree is fabulous. So many people I have spoken to wish that they'd had this option at university rather than going down one route.

Carol Dow
BA (Hons) Open



Related qualifications

Diploma of Higher Education Open (W34)
openuniversity.com/w34

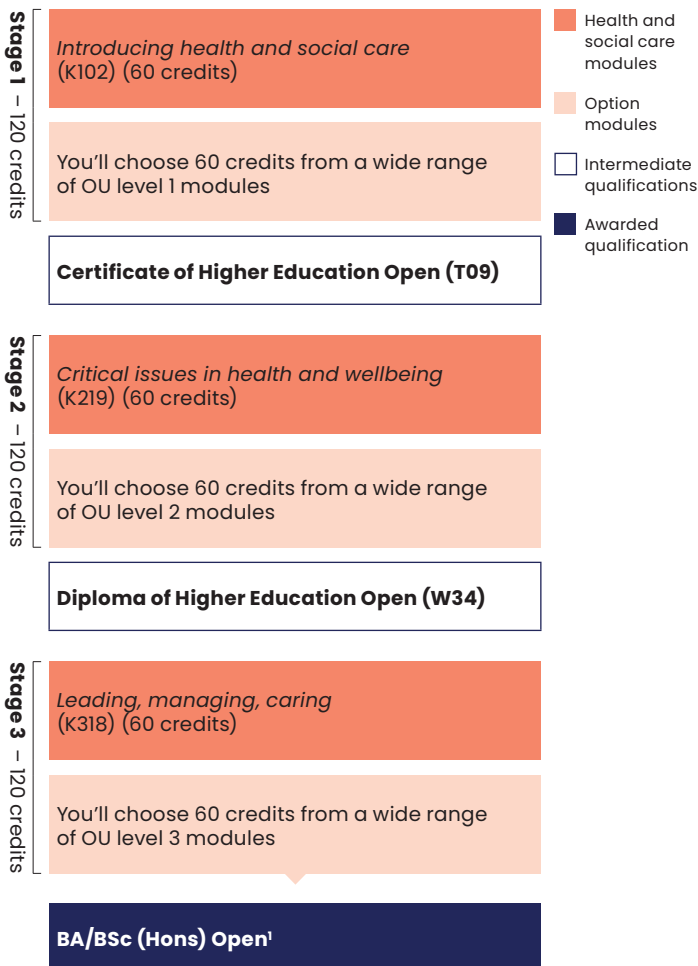
Certificate of Higher Education Open (T09)
openuniversity.com/t09

How you can focus your Open degree on health and social care

This selection of modules shows how you can focus on aspects of health and social care and combine them with other subjects that are of particular interest to you.

However, this is just one example of the many combinations you can study and you're not restricted to this route.

Example route



¹ Whether you qualify for a BA or BSc (Hons) Open will be determined by the number of credits you have from modules suitable for a BA or for a BSc.

At a glance

Course code QD

Total credits 360

Start dates

Oct 2023

Register by 7 Sep 2023

Feb 2024

Register by 11 Jan 2024

Entry requirements

No specific requirements

Assessment

Depending on the modules you choose to study, you may be assessed in any or all of the following ways:

- Tutor-marked assignments
- Interactive computer-marked assignments
- End-of-module assessments
- Examinations

Study duration

Part time: 6 years

Full time: 3 years

Mode of study

As the BA/BSc (Hons) Open can be made up of a range of different modules, the learning materials provided, use of online forums and inclusion of collaborative work will depend on the modules you choose to study

More online

Find out more about this course, fees and funding, and how to register.



Visit
openuniversity.co.uk/qd
 Call
 0300 303 5303



Find your postgraduate course

To work towards most postgraduate qualifications, you first need to choose and register on a module that counts towards that qualification.

Advanced clinical practice	
MSc in Advanced Clinical Practice (F85)	60
Postgraduate Certificate in Non-Medical Prescribing (K33)	61
Childhood and youth	
MA in Childhood and Youth (F55)	62
Social work	
MA in Social Work (F80)	63
Postgraduate Diploma in Social Work (E85)	
Professional doctorate	
Doctorate in Health and Social Care	64
Open masters	
MA/MSc Open (F81)	66

MSc in Advanced Clinical Practice

This qualification prepares you for an advanced clinical practice (ACP) role¹.

You'll develop your knowledge and critical understanding of the four pillars of ACP – advanced clinical practice, leadership, research and education – and learn advanced skills that enable you to act with a high level of autonomy. You'll enhance your skills in holistic and systematic assessment, complex decision making, and the provision of high-quality evidence-based interventions for patients, clients and their families. By studying while you work, your learning will be underpinned by applying theory to your scope of practice.

You should be supported by your healthcare employer to develop into an advanced clinical practice role. You may be eligible to apply for Recognition of Prior Learning by evidencing postgraduate level learning, accredited and/or experiential, see openuniversity.co.uk/f85 for further information.

Apprenticeships

For information on the Advanced Clinical Practitioner Degree Apprenticeship, go to openuniversity.co.uk/apprenticeships or call **0300 303 0529**.

¹ HEE 2017; NLIAH 2010; NPEX 2016; CNOD/SEND/Healthier Scotland 2016.

Qualification structure

Modules	Credits	Code
<i>Non-medical independent and supplementary prescribing</i>	60	K803
Postgraduate Certificate in Non-Medical Prescribing (K33)		
<i>Developing advanced clinical practice</i>	60	K804
Postgraduate Diploma in Enhanced Clinical Practice (E95)		
<i>Advancing professional practice</i>	60	K805
MSc in Advanced Clinical Practice		

Compulsory modules

Intermediate qualifications

Awarded qualification

Module availability is subject to change.

At a glance

Course code F85

Total credits 180

Start dates

For details of the next start date and full entry requirements, visit openuniversity.co.uk/f85

Study duration

Part time: 2.5–5 years

Related qualifications

Diploma in Enhanced Clinical Practice (E95)
openuniversity.co.uk/e95

Postgraduate Certificate in Non-Medical Prescribing (K33)
openuniversity.co.uk/k33

More online

Find out more about this course, fees and funding, and how to register.



Visit
openuniversity.co.uk/f85
Call
0300 303 5303



At a glance

Course code K33

Total credits 60

Start dates

For details of the next start date and full entry requirements, visit openuniversity.co.uk/k33

Study duration

Part time: 7 months

Postgraduate Certificate in Non-Medical Prescribing

This qualification will prepare you to be eligible to apply for annotation to your professional register as an Independent and/or Supplementary Prescriber.

Aimed at nurses, allied health professionals and pharmacists, you will gain a sound and critical understanding of the necessary clinical and practical aspects of prescribing in your clinical area of practice. Diagnostic radiographers and dietitians will be eligible to apply for annotation as Supplementary Prescribers.

Qualification structure

Modules	Credits	Code
<i>Non-medical independent and supplementary prescribing</i>	60	K803

Postgraduate Certificate in Non-Medical Prescribing

- Compulsory module
- Awarded qualification

Module availability is subject to change.

Related qualifications

MSc in Advanced Clinical Practice (F85)
openuniversity.co.uk/f85

Postgraduate Diploma in Enhanced Clinical Practice (E95)
openuniversity.co.uk/e95

More online

Find out more about this course, fees and funding, and how to register.



Visit
openuniversity.co.uk/k33
Call
0300 303 5303

MA in Childhood and Youth

This masters degree delivers an interdisciplinary approach to studying childhood and youth, covering aspects of theory, policy and practice.

It's well suited if you work with, or aspire to work with, children and young people. Or if you want to advance academically or in your profession. It's designed for graduates in childhood and youth studies, sociology, health and social care, anthropology, psychology, or education.

In the final stage of your masters, you'll expand your research and communication skills through the multi-disciplinary dissertation. Depending on your individual circumstances, you'll undertake either a small-scale inquiry, or an extended literature review and research proposal. This offers the opportunity to engage with research that will fit around your own context and professional circumstances.

Qualification structure

Modules	Credits	Code
<i>Children and young people's worlds</i>	60	E808
Postgraduate Certificate in Childhood and Youth Studies (K32)		
<i>Frameworks for critical practice with children and young people</i>	60	E809
Postgraduate Diploma in Childhood and Youth Studies (E93)		
<i>Masters multi-disciplinary dissertation: education, childhood and youth</i>	60	E822

MA in Childhood and Youth

- Compulsory modules
- Intermediate qualifications
- Awarded qualification

Module availability is subject to change.

At a glance

Course code F55

Total credits 180

Start date

Oct 2023

Register by 14 Sep 2023

Entry requirements

UK honours degree or equivalent

Study duration

Part time: 3 years

Related qualifications

Postgraduate Diploma in Childhood and Youth Studies (E93)
openuniversity.co.uk/e93

Postgraduate Certificate in Childhood and Youth Studies (K32)
openuniversity.co.uk/k32

More online

Find out more about this course, fees and funding, and how to register.



Visit
openuniversity.co.uk/f55
 Call
 0300 303 5303



At a glance

Course code F80

Total credits 180

Start date

Feb 2024

For further information, go to openuniversity.co.uk/f80

Entry requirements

Go to openuniversity.co.uk/f80 for full details

Study duration

Part time: 3 years

MA in Social Work

Our work-based programme allows you to qualify as a social worker in England and Scotland. It covers children and families, adult and mental health social work with reference throughout to the legal context.

During this course you will learn about social work theory and legislation, apply your learning to practice, and then develop your critical and analytical skills as a qualified practitioner. The subject matter is interdisciplinary, derived from psychology, sociology, social policy, law and social work studies.

Qualification structure

Modules	Credits	Code
<i>Developing social work practice</i>	60	K832
<i>Advancing social work practice</i>	60	K833
Postgraduate Diploma in Social Work (E85)		
<i>Advancing professional practice</i>	60	K805

MA in Social Work

- Compulsory modules
- Intermediate qualification
- Awarded qualification

Module availability is subject to change.

Related qualifications

Postgraduate Diploma in Social Work (E85)
openuniversity.co.uk/e85

This masters degree includes an embedded, professionally qualifying Postgraduate Diploma in Social Work. This leads to eligibility to apply for registration as a qualified social worker with Social Work England (SWE) or the Scottish Social Services Council (SSSC) in just 18 months.

More online

Find out more about this course, fees and funding, and how to register.



Visit
openuniversity.co.uk/f80
Call
0300 303 5303



Doctorate in Health and Social Care

The Doctorate in Health and Social Care (DHSC) is an innovative postgraduate research programme of part-time study. It's designed to support original research that will have an impact on health and social care policy and practice.

The doctorate programme is open to established professionals working in health and social care settings, including registered nurses, social workers and educators, but also other professionals working across health and social care including the public, voluntary and private sectors.

The degree is also open to unpaid carers, 'experts by experience' and advocates.

Research areas

The DHSC programme is organised into four research areas:

- Care and advocacy.
- Leadership in health and social care.
- Nursing.
- Social work and social care.

Programme of study

This is a highly-structured programme of study and research in two stages: Stage 1 (2 years taught) and Stage 2 (2-6 years research). You're expected to engage with the core online teaching material and a series of supporting online seminars. You'll be allocated two supervisors – your primary supervisor in year 1, and a co-supervisor in year 2 – and be linked to other students and their supervisors via the programme website and forums; you'll have the opportunity for face-to-face supervision, teaching input and student interactions through annual residential weekends.

At a glance

Start date

Oct 2024
Applications close
31 Jan 2024

Entry requirements

- You should have a masters degree, in health and social care or a related discipline, from a UK or EU university or other recognised degree awarding body
- If you don't have a masters degree, you must demonstrate your suitability for postgraduate level research. Publications, written reports or other evidence of previous research may be considered
- At least two years of relevant professional experience

Study duration

Part time: 4–8 years

Stage 1

This first stage will involve studying online materials on topics that include:

- The context of health and social care research.
- Literature reviewing.
- Ethics.
- The principles of research design.
- Methods of data collection and analysis.

Stage 1 is assessed through the submission of formative and summative assignments that focus on developing your literature review, refining your research questions and your proposal for research. This work forms the basis for the thesis work in Stage 2.

Stage 2

If you make satisfactory progress in Stage 1, you'll begin supported and supervised research for another 2–6 year period.

During this time, you'll follow a more independent and individual programme of work, with the continuing support of your supervisors. Progress is monitored through regular written drafts and culminates in the submission of a thesis of up to 65,000 words.

The thesis element will be examined by viva-voce.

The general criteria for assessment are:

- The demonstration of reflection on the relationship between theory and practice in health and social care.
- A significant contribution to the theory and practice of health and social care.
- A high level of critical analysis.
- An ability to select and apply appropriate research methods.

On successfully meeting these criteria, you'll be awarded the Doctorate in Health and Social Care, entitling you to use the title 'Doctor'.

More online

Find out more about this course, fees and funding, and how to register.



Visit
**openuniversity.
co.uk/dhsc**
Call
0300 303 5303

MA/MSc Open

Do you want the freedom to create a personalised course of study across a range of academic disciplines? Then our MA/MSc Open is ideal.

Put simply, the MA/MSc Open gives you choice. It allows you the freedom to tailor your qualification to suit you. Choose modules and microcredentials from a wide range of related subject areas to fit your professional needs and personal interests.

Qualification structure

To gain this qualification, you need **180 credits**. There are two routes through this qualification:

Route 1: You can study **180 credits** and specialise within one of the following broadly related study areas:

- Arts, humanities, music and language
- Education, psychology, health science and healthcare
- Science, technology, engineering and mathematics
- Business, finance, human resources and law.

Route 2: You can choose to study a **minimum 120 credits** within one study area (chosen as your area of specialism) and take up to **60 credits** from any other study area, including:

- Further professional development.

Module and microcredential availability are subject to change.

Arts, humanities, music and language

Title	Credits	Code
<i>MA Creative Writing part 1</i>	60	A802
<i>MA Art History part 1</i>	60	A843
<i>MA Philosophy part 1</i>	60	A853
<i>MA Classical Studies part 1</i>	60	A863
<i>MA Music part 1</i>	60	A873
<i>MA History part 1</i>	90	A883
<i>MA English literature part 1</i>	90	A893
<i>Introduction to translation theory and practice</i>	60	L801

Education, psychology, health science and healthcare

Title	Credits	Code
<i>Principles of social and psychological inquiry</i>	60	DD801
<i>Children and young people's worlds</i>	60	E808
<i>Educational leadership: agency, professional learning and change</i>	60	EE811
<i>Addressing inequality and difference in educational practice</i>	60	EE814
<i>Applied linguistics and English language</i>	60	EE817
<i>Learning and teaching: educating the next generation</i>	60	EE830
<i>Technology-enhanced learning: foundations and futures¹</i>	60	H880
<i>Non-medical independent and supplementary prescribing</i>	60	K803
<i>Introduction to mental health science</i>	60	S826

¹ Module hosted on FutureLearn.

Science, technology, engineering and mathematics

Title	Credits	Code
<i>Information security</i>	30	M811
<i>Digital forensics</i>	30	M812
<i>Software development</i>	30	M813
<i>Data management</i>	30	M816
<i>Calculus of variations and advanced calculus</i>	30	M820
<i>Analytic number theory I</i>	30	M823
<i>Advanced mathematical methods</i>	30	M833
<i>Coding theory</i>	30	M836
<i>Space science</i>	60	S818
<i>Environmental science challenges</i>	30	S831
<i>Finite element analysis: basic principles and applications</i>	30	T804
<i>Manufacture materials design</i>	30	T805
<i>Network security</i>	30	T828
<i>Environmental monitoring and protection</i>	30	T868
<i>Making environmental decisions</i>	30	T891

Business, finance, human resources and law

Title	Credits	Code
<i>The role of the human resource professional</i>	30	B810
<i>Financial markets and the financing of organisations</i>	30	B815
<i>Financial strategy and governance</i>	30	B816
<i>MA International relations part 1</i>	90	D818
<i>Exploring legal meaning</i>	30	W820
<i>Exploring the boundaries of international law</i>	30	W821
<i>Business, human rights law and corporate social responsibility</i>	30	W822

Further professional development

Title	Credits	Code
<i>Sustainable creative management</i>	15	BB842
<i>Supply chain management</i>	15	BB849
<i>Entrepreneurship in context</i>	15	BB851
<i>Leadership and management of public services</i>	15	BB852
<i>Contemporary issues in organisations</i>	15	BB853
<i>Management of uncertainty: leadership, decisions and action²</i>	15	BZFM801
<i>Management of change: organisation development and design²</i>	15	BZFM802
<i>Global development in practice¹</i>	60	D890
<i>Understanding global development</i>	60	DD870
<i>Mentoring and coaching in professional learning²</i>	15	EZFM802

Title	Credits	Code
<i>Developing educational leadership in practice²</i>	15	EZFM803
<i>Online teaching: creating courses for adult learners²</i>	15	HZFM881
<i>Online teaching: evaluating and improving courses²</i>	15	HZFM882
<i>Mental health: working with children and young people²</i>	15	KZFM801
<i>Project management</i>	30	M815
<i>Strategic capabilities for technological innovation</i>	30	T849
<i>Sustainable organisations: theory and practice</i>	30	T892
<i>Technology and innovation management</i>	30	TB801
<i>Making strategy with systems thinking in practice</i>	30	TB871
<i>Managing change with systems thinking in practice</i>	30	TB872
<i>Agile leadership and management²</i>	15	TZFM850
<i>Continuing professional development in practice</i>	30	U810
<i>Advance your independent learning</i>	30	YXM830

¹ Module hosted on FutureLearn.

² Microcredential hosted on FutureLearn.

At a glance

Course code F81

Total credits 180

Start dates

Sep 2023

Oct 2023

Nov 2023

Feb 2024

May 2024

Entry requirements

Entry to this qualification will typically require a UK honours degree or equivalent qualification relevant to your intended specialist area of study

Study duration

Part time: 3 years

What are microcredentials?

10–12 week professional development courses from The Open University hosted on our partner platform, FutureLearn. For more information, go to openuniversity.co.uk/counting-microcredentials.

More online

Find out more about this course, fees and funding, and how to register.



Visit
openuniversity.co.uk/f81
Call
0300 303 5303



Registering is easy

Undergraduate study

1. Register

Go to your chosen qualification webpage, select your preferred start date and click 'Register now'.

2. Choose your module(s)

Select the module(s) you want to study in your first year. Some may be compulsory while others may be selected from a list of options.

3. Organise your funding

Tell us how you'll be funding your chosen module. You'll find all your options here openuniversity.co.uk/ug-fees.

4. Complete your registration

Confirm your funding method. That's it – you're ready to start learning.

We recommend registering as early as possible. Once you're registered, you'll get access to our learning tools, materials and the student support that'll help you get going.

For more on the registration process, visit openuniversity.co.uk/ug-apply.

Postgraduate study

To work towards a postgraduate qualification, register on a module that counts towards it.

1. Choose your qualification

Once you've decided on a qualification, go to our website for the full course details and entry criteria you'll need to meet.

2. Register on your first module(s)

Modules within postgraduate qualifications have more detailed entry requirements, so make sure you've read these before registering.

3. Arrange your funding

You'll find all your options at openuniversity.co.uk/pg-fees.

4. Send us evidence that confirms you meet the entry requirements

Once your evidence has been assessed and approved, your registration will be complete.

For more on the registration process, visit openuniversity.co.uk/pg-apply.

Have you studied before?

If you've studied at university level before, you might be able to count that study towards an OU qualification. This could save you time and money by reducing the number of modules you need to study with us.



Visit openuniversity.co.uk/credit-transfer

Useful information

Study from outside the UK

You could study with the OU wherever you are in the world.

Find out more by visiting openuniversity.co.uk/international or call **+44 (0)300 303 0266**.

Students with additional study needs

When you register, we'll ask whether you have a physical or mental health disability, health condition, or specific learning difficulty (such as dyslexia) that could affect your study. If you do, we'll give you more detailed information about how we can help.

For more information, go to openuniversity.co.uk/disability or call us on **0300 303 5303**.

Equality and diversity

We're committed to creating an inclusive university community where everyone is treated with dignity and respect.

We challenge inequality and anticipate and respond positively to different needs so that everyone can fulfil their ambition.

Find out more by visiting openuniversity.co.uk/equality.

Students under the age of 16

Very exceptionally, we accept applications from gifted students under the age of 16.

Contact us on **0300 303 5303** if you'd like to apply.

Data protection

We record your personal information when you contact us. We use this to manage enquiries, registration, study, examination and other services. Calls may be recorded to help us improve our service to you. When you contact us, we'll tell you more about how we treat your personal information.

For more information, go to openuniversity.co.uk/privacy.

Other ways to read this prospectus

You may find it easier to access information from our website at openuniversity.co.uk.

We can also supply this prospectus as a PDF and in other formats. Please call **0300 303 5303**, or email us from our website at openuniversity.co.uk/contact.

Our other prospectuses

Learn more about our qualifications in our other prospectuses.

Subject-specific prospectuses

- Arts and Humanities
- Business and Management
- Computing and IT
- Education, Childhood, Youth and Sport
- Engineering, Design and Technology
- Environment and Development
- Languages and Applied Linguistics
- Law
- Mathematics and Statistics
- Psychology and Counselling
- Science
- Social Sciences

Other prospectuses

- Access Modules
- Open Qualifications
- Postgraduate Courses
- Undergraduate Courses

We have made all reasonable efforts to ensure that the information in this prospectus is accurate at the time of publication. However, we shall be entitled, if we consider it reasonably necessary (including in order to manage resources and improve student experience) to make changes, including to the availability of modules and qualifications, to qualification structure and to our regulations, policies and procedures. For current information, please refer to our online prospectus at openuniversity.co.uk/courses.

If you require further information about the circumstances in which we may make changes, please contact us or refer to the Academic Regulations on our website at openuniversity.co.uk/academic-regulations.

Request a prospectus

Download or order a prospectus.



Visit openuniversity.co.uk/prospectus

Get in touch

If you're in England, Scotland, Wales, the Channel Islands, the Isle of Man or have a British Forces Post Office address

- Email us from our website openuniversity.co.uk/contact
- Call our Student Recruitment team on **0300 303 5303**

Lines are open (UK time)
Monday to Friday: 08:00–17:30

Calls are charged at the local rate when calling from a UK mobile phone or landline.

In Northern Ireland

- Email northernireland@open.ac.uk
- Call our Belfast office on **028 9032 3722**

In the Republic of Ireland

- Email ireland@open.ac.uk
- Call our Enquiry and Advice Centre in Dublin on **(01) 6785399** or our Belfast office on **+44 (0)28 9032 3722**

All other countries

- Go to openuniversity.co.uk/contact
- Call us on **+44 (0)300 303 0266**

I siaradwyr Cymraeg

Os ydych yn siarad Cymraeg a byddai'n well gennych drafod eich anghenion astudio drwy gyfrwng y Gymraeg, cysylltwch â:

Y Brifysgol Agored yng Nghymru
18 Heol y Tollty
Caerdydd
CF10 1AP

- Ffoniwch ni ar **029 2047 1170**
- E-bost cymorth-cymru@open.ac.uk

The Open University is incorporated by Royal Charter (RC 000391), an exempt charity in England & Wales, and a charity registered in Scotland (SC 038302).

The Open University is authorised and regulated by the Financial Conduct Authority in relation to its secondary activity of credit broking.

Printed by Paragon-CC on FSC® certified stocks and using 100% vegetable inks

Copyright © 2023
The Open University.
SUP 118023

Image credit:
pg. 44 – Zach Vessels

